

# The isocheck 24T & 15T systems

CI/SfB (43) (Y) (P2)

August 2008

Rev 2.0

Traditional overlay system for new build, conversion & refurbishment

product data sheet

## PRODUCT DATA

Overall size: Isocheck 24T	2400 x 600 x 24mm o/a h
Isocheck 15T	1200 x 600 x 15mm o/a h
Resilient layer thickness	6mm
Resilient layer	Isofiba
Weight: Isocheck 24T	15.35kg/m <sup>2</sup>
Isocheck 15T	7.05kg/m <sup>2</sup>

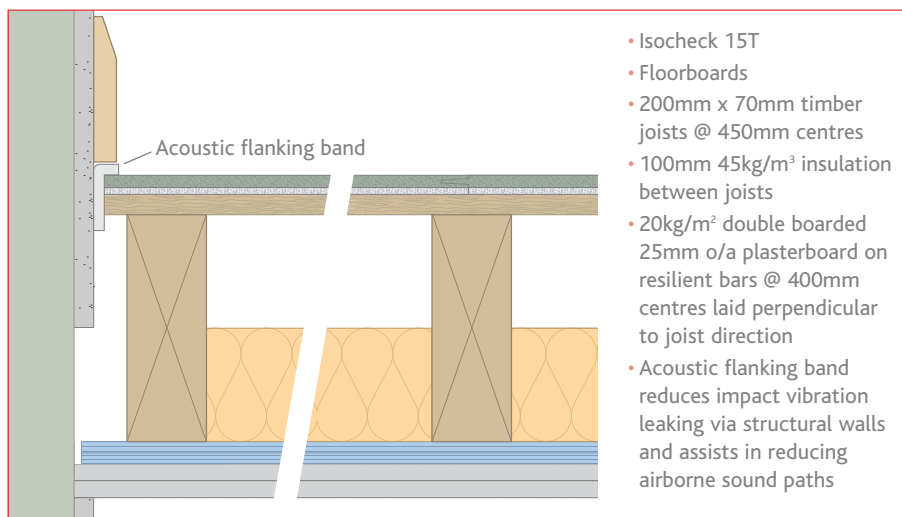
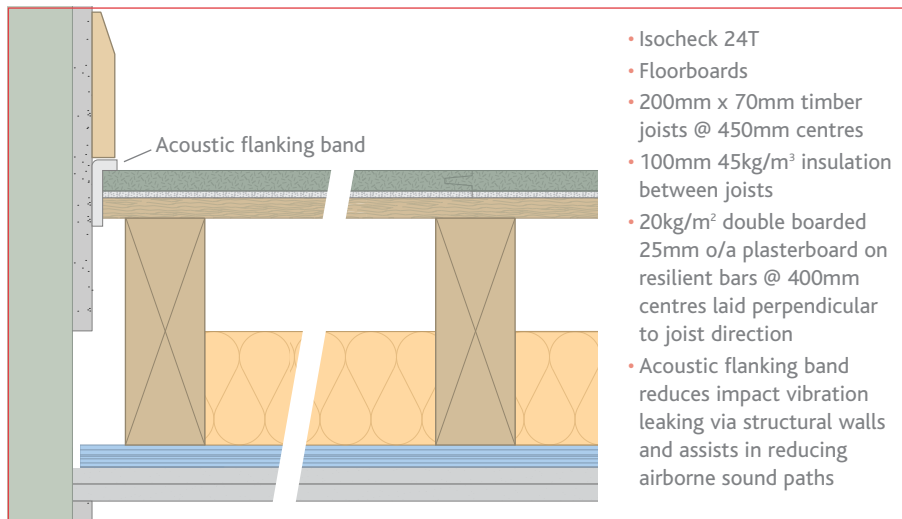
## PERFORMANCE (on the constructions illustrated below)

Treated floor with:	$D_{nT,w} + C_{tr}$	$L'_{nT,w}$
Isocheck 24T	49dB	54dB (rated ★★☆☆)
Isocheck 15T	48dB	52dB (rated ★★☆☆)

## DESCRIPTION

Isocheck 24T & 15T systems are designed to reduce sound transmission through traditional joisted timber floors.

Isocheck 24T consists of a 6mm layer of 'Isofiba' bonded to 18mm P5 V313 moisture resistant chipboard, whereas Isocheck 15T consists of a 6mm layer of Isofiba bonded to 9mm moisture resistant medium density fibreboard. When installed as part of a complete party floor construction either system enables a traditional timber joisted floor to meet the sound transmission standards of ADE 2003 (amended 2004).



## SPECIFICATION

The acoustic floor shall be:

- **Isocheck 24T or 15T**, manufactured by Isomass Ltd. St Johns Innovation Centre, Cowley Road, Cambridge, CB4 0WS and installed in accordance with manufacturer's instructions / recommendations.

## INSTALLATION

- Fix Isocheck Acoustic angled Flanking Band on the edges of the Isocheck boards just before they are pushed against the perimeter walls to isolate the board from the wall.
- Lay Isocheck 24T or 15T over a structural timber sub-floor, in stretcher bond pattern, applying Isocheck adhesive to all tongued and grooved panel joints.
- Install skirting and trim off excess Flanking Band.
- Full installation instructions are available and must be used in conjunction when laying this floating floor system.

For advice on treatment of services and penetrations, consult our brochure or visit our website:

[www.isomass.co.uk](http://www.isomass.co.uk)

Every effort has been taken in the preparation of this sheet to ensure the accuracy of representations contained herein. Recommendations as to the use of materials, construction details and methods of installation are given in good faith and relate to typical situations. However, every site has different characteristics and reliance should not be placed upon the foregoing recommendations. Advice can be given as to specific applications.



Isomass Ltd. St Johns Innovation Centre, Cowley Road, Cambridge, Cambridgeshire CB4 0WS

## TECHNICAL ENQUIRIES

Tel: 0845 838 33 99

Fax: 0845 838 33 89

Email: [info@isomass.co.uk](mailto:info@isomass.co.uk)