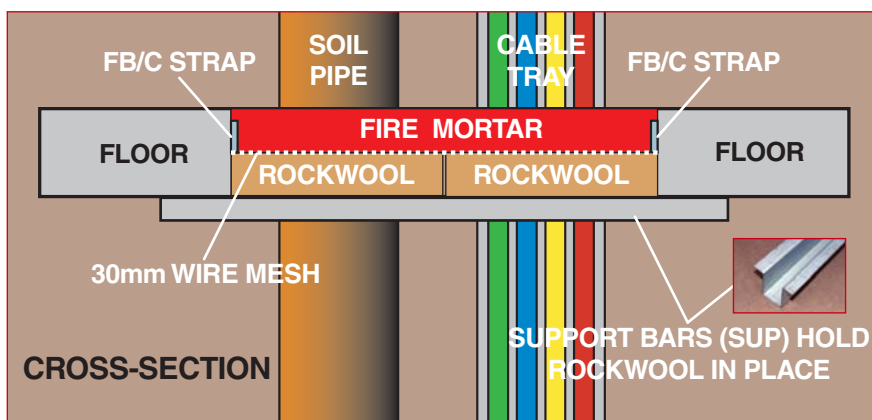
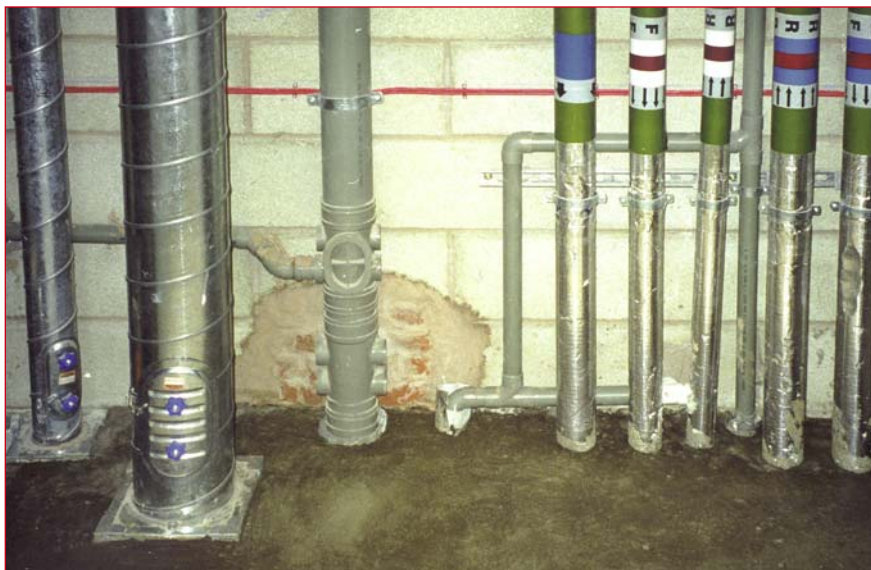


ENVIROGRAF® PRODUCT 6

FIRE MORTAR



DESCRIPTION

A dry mix to which water is added and then mixed like plaster or sand/cement. **No shuttering boards are required.** When set, the mortar is load bearing. It can be drilled with wood bits and is easily cut to allow the installation of services. Standard single-bag FM mix available in 25kg bags (FM25). A new two-bag FM/A mix comprises one FM25 bag and one 6.25kg bag of pumice aggregate additive to be mixed uniformly together before adding water – this has greater volume than the standard FM25 bag yet retains structural integrity.

USE

Good for fire stopping around building services that pass through floors. Lay rockwool slabs into the opening, leaving the required depth for the mortar, according to the loading required. It is essential to fit Envirograf® Product 7 (intumescent wraps) around PVC pipes, cables, and steel pipes. For areas over 600x900mm, it is essential to reinforce with 30mm chicken wire mesh, fixed with FB/C straps and support battens. See data sheet for full details.

PERFORMANCE

Tested in accordance with BS476 Part 22 (1987). The test report shows that there was no loss of integrity of the slab itself during the 240 minutes period and 240 minutes insulation. For non-load-bearing areas, 25mm thickness will give 240 minutes integrity. For load-bearing areas, 50mm thickness for light loading, 60mm thickness for medium loading and 70mm thickness or more for heavy loading.

ORDERING REFERENCES:

FM25	25kg
FM25/A	Fire Mortar/Aggregate 31.25kg (FM25 & 6.25kg additive)
FB/C1	25x1250mm steel straps*
FB/C2	25x2500mm steel straps*
	*with fixing holes at 300mm centres
SUP	Support Bars (folded zintec metal strips 18SWG)

PATENTED



SPECIAL DELIVERY CHARGES APPLY: PLEASE SEE PRICE LIST