

The isocheck Deep Batten system

CI/SfB
____ (43) ____ (Y) ____ (P2)
August 2008 Rev 2.0

Suspended system for new build & conversion

PRODUCT DATA

Overall batten size	1800mm x 45mm x 78mm O/A
Resilient layer thickness	Down to approx. 14mm under a normal domestic load.
Resilient layer	Isofiba

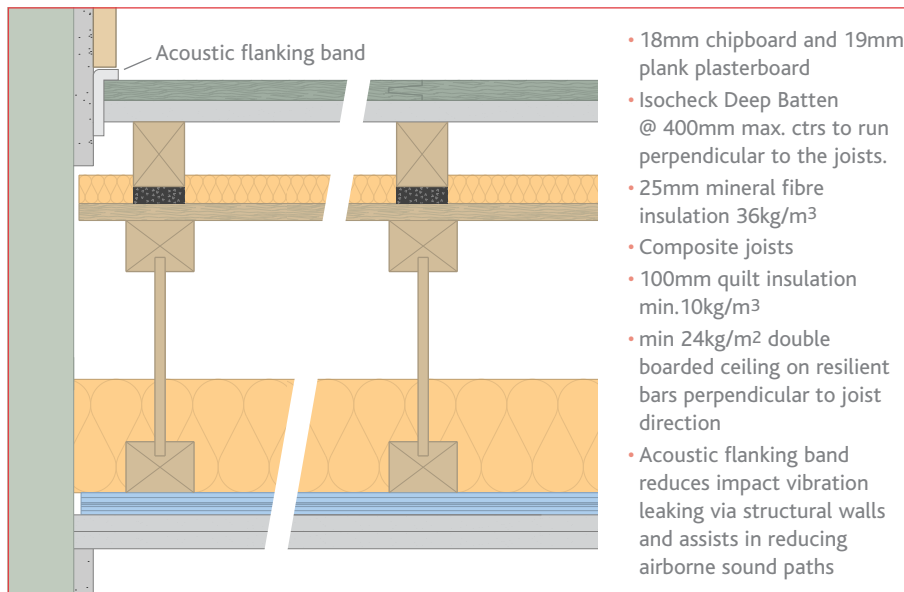
PERFORMANCE

Treated floor meets with the descriptive FFT1, typically within Robust Detail E-FT-1 and E-FT-2.

DESCRIPTION

Isocheck Deep Batten system is designed to reduce sound transmission through timber floors within a timber frame structure.

Isocheck Deep Batten consists of a batten bonded to 18mm 'Isofiba'. When installed as part of a complete party floor construction it enables a timber floor to meet the sound transmission standards of ADE 2003 (amended 2004).



Should the requirement be for a batten height other than that specified on this page please contact us for further technical advice and suitability.

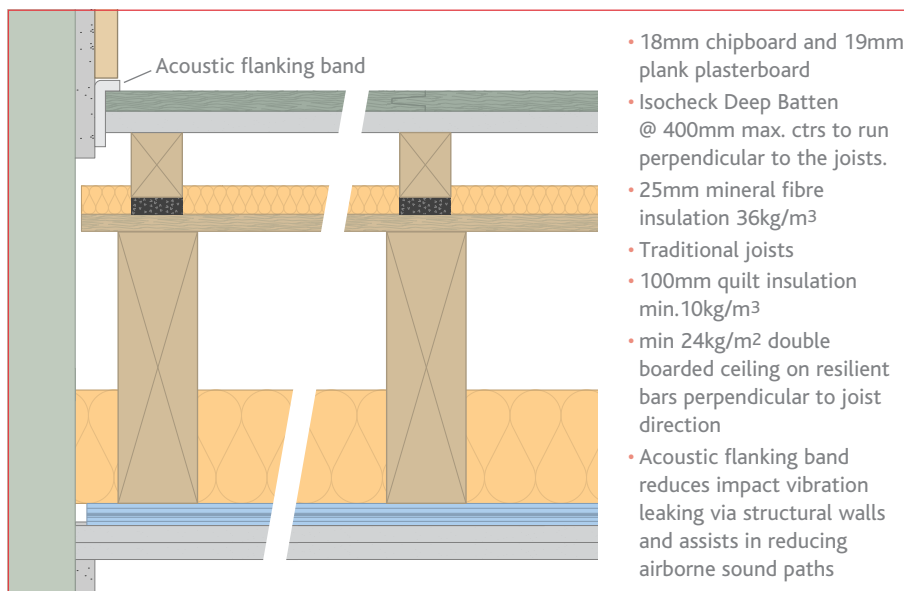
SPECIFICATION

The acoustic floor shall be:

- **Isocheck Deep Batten**, by Isomass Ltd. St Johns Innovation Centre, Cowley Road, Cambridge, CB4 0WS and installed in accordance with manufacturer's instructions / recommendations.

INSTALLATION

- Lay Isocheck Deep Batten resilient layer side down, at 400mm max. centres with 19mm plank plasterboard and 18mm chipboard flooring over.
- Fix Isocheck deep angled Acoustic Flanking Band on the edges of the chipboard and plasterboard before they are pushed against the perimeter walls to isolate both boards from wall.
- Apply Isocheck adhesive to all tongued and grooved panel joints.
- Install skirting and trim off excess Flanking Band.
- Full installation instructions are available and must be used in conjunction when laying this floating floor system.



Every effort has been taken in the preparation of this sheet to ensure the accuracy of representations contained herein. Recommendations as to the use of materials, construction details and methods of installation are given in good faith and relate to typical situations. However, every site has different characteristics and reliance should not be placed upon the foregoing recommendations. Advice can be given as to specific applications.

For advice on treatment of services and penetrations, consult our brochure or visit our website:

www.isomass.co.uk

TECHNICAL ENQUIRIES

Tel: **0845 838 33 99**

Fax: **0845 838 33 89**

Email: info@isomass.co.uk