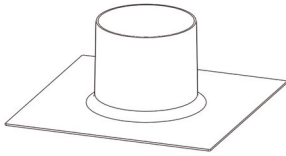
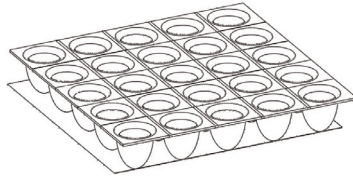


# Active-guard HB hydrocarbon barrier

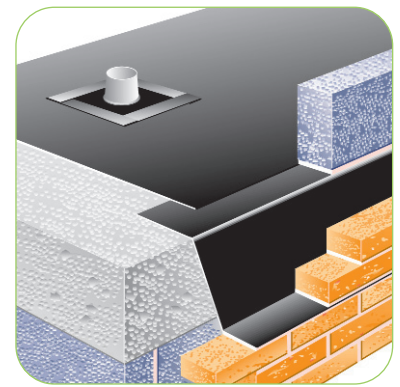
Barrier system for ground protection measures against hydrocarbons



Top hat collar



Venting layer



## Use

- To act as a barrier against gas contaminated land and for brown field sites contaminated with hydrocarbons
- To cover the foot print of a building to barrier against hydrocarbons
- To form base layer for storage and landscaped contaminated top soil
- Following a risk assessment and the requirement is for a ground gas protection and/ or a measure against hydrocarbon

## Features and benefits

- Install in line with common code of practice for ordinary DPM plus additional care with workmanship & detailing to joints (BS8215:1991, BS8000:Part 3, 1989 and BS5628:Part 3, 2005)
- Wide range of standard pre fabricated accessories
- Robust virgin material in a range of thickness offering high puncture and tear resistance
- Small handy rolls available <25kg for easy manual handling
- Full itemised schedule service available
- Tailor made accessories designed and manufactured in High Density Polyethylene (HDPE) for maximum hydrocarbon resistance
- Flexible and Rigid cavity tray material available for cavity wall protection

## Quality

- Satisfies recommendations of BRE 414 "Protective measures for housing on contaminated land" & Ciria report C665 "Assessing risks posed by hazardous ground gases to buildings"
- Manufactured to BS EN ISO 9001:2000
- Complies with Building Regulation 2000 Approved Documents C1 & C2
- Meets all relevant British Standards (CP102 and BS8102)

## Material specification

Product code:	<b>HB1000</b>	<b>HB1300</b>	<b>HB1500</b>
Thickness:	<b>1mm</b>	<b>1.3mm</b>	<b>1.5mm</b>
Roll length:	<b>30mtr</b>	<b>20mtr</b>	<b>25mtr</b>
Roll width:	<b>2.95mtr</b>	<b>1mtr</b>	<b>2.95mtr</b>
Roll weight:	<b>85kg</b>	<b>24.7kg</b>	<b>105kg</b>
Colour:	<b>Black</b>	<b>Black</b>	<b>Black</b>

## Mechanical properties

Tear strength MD/CD:	<b>149-156 N/mm/145-156 N/mm</b>
Elongation at break:	<b>860% 845%</b>
Petrol permeability (g/m <sup>2</sup> /h):	<b>7.0 3.8</b>
Diesel permeability (g/m <sup>2</sup> /h):	<b>14.8 1.7</b>
Methane permeability (cc/m <sup>2</sup> /h)	<b>3.2 1.95</b>

## Bill of quantity (Hydrocarbon gas barrier membrane)

### J40 Flexible sheet tanking/damp proofing

#### Clause

140 LOOSE LAID POLYETHYLENE GAS RETARDANT/DAMP PROOF MEMBRANE

- Manufacturer: **Timloc Building Products, Rawcliffe Road, Goole, East Yorkshire, DN14 6UQ. Tel: 01405 765567, Fax: 01405 720479. Web: www.timloc.co.uk**
- Reference: **Active Guard HB1000 - Hydrocarbon Barrier 1mm**
- Product code: **HB1000**

- Use: For use in all types of floor construction to protect buildings against gas penetration from the ground. To cover the full footprint of the building and to incorporate proprietary accessories for pipe, vent protrusions.

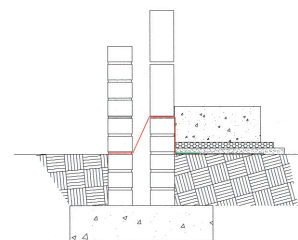
## Products in the system

### HB1300 handy roll size - 1mtr x 20mtr

The HDPE hydrocarbon barrier is available in a manual handling roll size <25kg to facilitate handling in areas when no fork lift is available and installation when smaller areas need protection as with housing. The handy size is rolled out in 1mtr strips over the area requiring protection and strip jointed with tape.

### HB1000 & HB1500 - 2.95mtr x 30 & 25mtr rolls

Our large hydrocarbon rolls are available when minimal joints are required and/or large areas are to be covered.

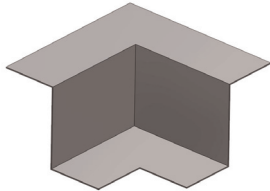


## Preformed cavity tray system

The Active-guard system works by reducing on site exposure to the membrane through the use of independent preformed and rigid cavity trays installed to the perimeter of the building, in both the cavity wall with our PCT range, and internally at slab edging with our SPT range.

# Active-guard HB hydrocarbon barrier

Barrier system for ground protection measures against hydrocarbons



Corners

### Horizontal slab perimeter trays (SPT range)

Supplied in 2.5mtr lengths and manufactured from heavy duty 2mm PP. They should be installed continuously around the internal slab pour area allowing the membrane to be laid at a later stage and so prevent damage as building work proceeds.

### Horizontal cavity perimeter trays (PCT range)

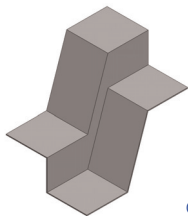
Supplied in 2.5mtr lengths and manufactured from heavy duty 2mm PP. They should be installed continuously around the external perimeter of a building to allow the membrane to be laid at a later stage and so prevent damage as building work proceeds.

### Hydrocarbon DPC (HBDPC)

A more flexible option to form a perimeter cavity tray and is only available in widths of 645mm & 970mm, joints and junctions will require preformed accessories for support.

### Corners

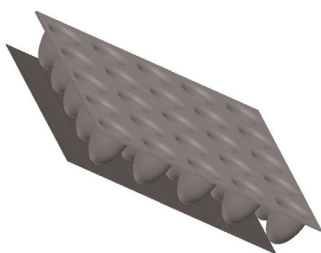
Available in both SPT HD and PCT HD ranges and are manufactured from heavy duty 2mm virgin HDPE. The standard corners are 90° but a wide range of options are available and selection is by cavity size and damp proof course or slab rise required.



Change of level units

### Stopends & change of level units

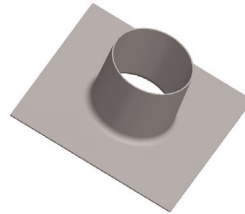
Available in the PCT HD range and are manufactured from heavy duty 2mm virgin HDPE and are suitable if step breaks appear in the natural run of the cavity tray system, available in cavity size and rise options with 75,150 and 225mm steps.



Gas venting layer (GLV25)

### Gas venting layer (GVL25)

Prefabricated venting layers are required when a sub floor depressurisation is required under full gas protection. The layer is installed beneath the floor slab in non suspended floor applications and dressed onto a geotextile filter to prevent blockage, and then allowed to vent to atmosphere via a sequence of connecting parts. To connect venting layer to an external source requires capping off



Top hat collar

with a GVL900 connector and then extended to length with 1206 extensions to terminate at a telescopic underfloor vent (1201) with airbrick fascia (1201AB) The venting layer strips of 915mm and telescopic vents should be installed at 2 metre centres to generate adequate airflow rate.

### Telescopic gas vent outlets (1201+1201AB+1206+GVL900)

The combined units will allow ventilation outlets to either a sub floor void or via a range of adaptors to a venting layer and allow the provision of a minimum of one complete volume change per 24 hours as required by the NHBC. The Timloc vent units will achieve an airflow rate of 4.85L/sec (17m<sup>3</sup>/hr) or equal to an equivalent area of 6000mm<sup>2</sup>. NB. All airflow testing has been independently tested by the BRE to BS EN 13141-1.

### Televent gas sleeve tray (TST01HD)

For use when telescopic under floor vents need to pass through a perimeter cavity while still maintaining gas tight integrity by sealing with gastite and girth tape.

### Top hat pipe collars (TH055HD, TH082HD, TH110HD, TH135HD, TH160HD)

Top hat pipe collars are available in sizes from 55mm to 160mm. A standard range of preformed pipe sleeves that are designed to have sealing tape applied to the unit base to offer a unit for sealing to a gas barrier and at the intersection of pipe projections.

Common applications are for soil /service pipes passing vertically via a gas barrier or membrane to maintain a continuous seal. All sealing tapes (GTAPE 01) and fixing bands (JCLIP 5,6 or 7) are supplied separate to top hat units.

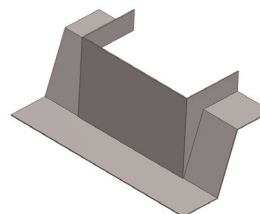
Jubilee clips size 5 (90mm - 120mm)

Jubilee clips size 6 (110mm - 140mm)

Jubilee clips size 7 (135mm - 160mm)

### Threshold internal protection tray (TPT01HD)

Designed for detailing rebated areas inside door threshold to maintain water and gas tight integrity without having to trim membrane to fit. Due to possible variations in size, threshold dimensions will be required.



Column cloak

### Column cloaks (made to order)

None standard applications can require gas and water integrity around columns and stanchions. Timloc will design and produce rigid preformed units that are user friendly: simply contact our technical department.

# Active-guard HB hydrocarbon barrier

Barrier system for ground protection measures against hydrocarbons

Page 3 of 3

## Gastite sealing tape (GTAPE01)

A 2mm x 100mm wide double sided modified polymer strip, protected on both sides with a silicone release paper. The principle is to apply tape between parts of the system in continuous joint lengths to achieve a gas tight seal.

## Foil girth tape (GTAPE04)

A single sided 75mm wide foil tape with an aggressive adhesive to one side, used to cap overlaps that have been sealed with gastite tape to prevent uplift of joints when concrete slab or screed is poured.

## How to order

- Timloc can prepare a comprehensive schedule and quotation service by forwarding full working drawings and specifications to our technical department
- Orders can be established from written quotations by stipulating number issued

## Bill of quantity (Hydrocarbon barrier accessories)

### F30 Accessories/sundry items for brick/block/stone walling

Clause

360 GAS RESISTANT CAVITY TRAY ACCESSORIES

- Manufacturer: **Timloc Building Products, Rawcliffe Road, Goole, East Yorkshire, DN14 6UQ. Tel: 01405 765567, Fax: 01405 720479. Web: www.timloc.co.uk**
- Reference: e.g. **External 90° corner tray**
- Size: e.g. **PCT150 - 100mm cavity**
- Product code: e.g. **5114HD**
- Use: For use in all types of floor construction to protect buildings against gas penetration from the ground. To cover the full footprint of the building and to incorporate proprietary accessories for pipe, vent protrusions.

## Product Codes

### Active-guard HB hydrocarbon barrier and accessories

Description	Product code
Active-guard HB1000 1mm hydrocarbon barrier	HB1000
Active-guard HB1300 1.3mm hydrocarbon barrier	HB1300
Active-guard HB1500 1.5mm hydrocarbon barrier	HB1500
Hydrocarbon DPC 645mm wide	HBDCP/645
Hydrocarbon DPC 970mm wide	HBDCP/970
Top hat pipe collars 55mm - 160mm	TH055 - 160HD
Jubilee clips size 5, 6, 7	JCLIP 5,6 or7
Gas venting layer - 25mm x 915mm	GVL25
Geotextile filter layer	GVF
Gas venting layer to televent connector	GVL900
Telescopic underfloor vent	1201
Air brick	1201AB
Horizontal rear extension	1206
Duct adaptor to 110mm soil pipe	1205
Televent gas sleeve tray (cavity tray profile req.)	TST01HD
Threshold internal protection tray 930mm	TPT01HD
Gastite sealing tape 100mm x 15mtr	GTAPE01
Foil girth tape 75mm x 50mtr	GTAPE04
SPT150 Slab perimeter tray 150mm rise	5107HD
SPT150 Corner tray 90° - 150mm rise	5122HD
SPT225 Slab perimeter tray 225mm rise	5108HD
SPT225 Corner tray 90° - 225mm rise	5123HD

	Product codes to suit cavity widths of		
	50mm	75mm	100mm
PCT150 Perimeter tray 150mm rise	5101HD	5102HD	5103HD
PCT150 External 90° corner tray	5110HD	5112HD	5114HD
PCT150 Internal 90° corner tray	5111HD	5113HD	5115HD
PCT150 Stopend RH	5130HD	5132HD	5134HD
PCT150 Stopend LH	5131HD	5133HD	5135HD
PCT150 Change of level 75mm step	9060HD	9063HD	9066HD
PCT150 Change of level 150mm step	9061HD	9064HD	9067HD
PCT150 Change of level 75mm step	9062HD	9065HD	9068HD
PCT225 Perimeter tray 225mm rise	5104HD	5105HD	5106HD
PCT225 External 90° corner tray	5116HD	5118HD	5120HD
PCT225 Internal 90° corner tray	5117HD	5119HD	5121HD
PCT225 Stopend RH	5136HD	5138HD	5140HD
PCT225 Stopend LH	5137HD	5139HD	5141HD
PCT225 Change of level 75mm step	9070v	9073HD	9076HD
PCT225 Change of level 150mm step	9071HD	9074HD	9077HD
PCT225 Change of level 75mm step	9072HD	9075HD	9078HD