

MVHR.65

MECHANICAL SUPPLY & EXTRACT VENTILATION WITH HEAT RECOVERY

FEATURES	CONTROLS	PHYSICAL SPECIFICATION
----------	----------	------------------------

Continuously running supply and extract ventilation system designed to contribute to indoor air quality

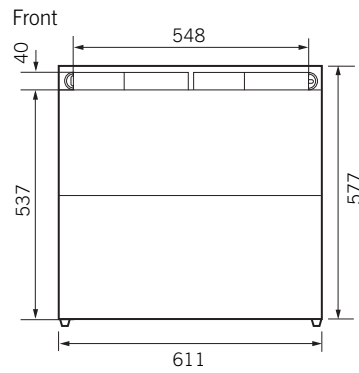
65% Heat recovery

Onboard Frost Protection and Integral Supply Fan Deactivator ensures humid air passing cold exchanger in loft does not affect unit performance

Condensate drain allows all excess moisture to be carried outside

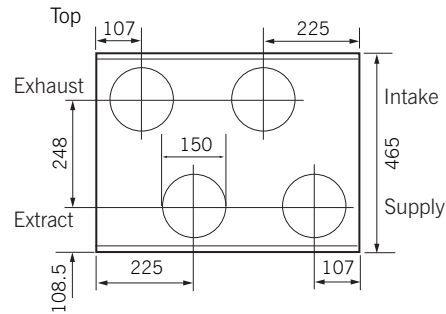
Integral filter removes dust and pollen particles from replacement air which is distributed to habitable rooms

Wired in **remote switch** to control trickle, medium & boost speeds.



Weight: 32kg.

Material: Powder coated aluminium construction, ABS spigots.



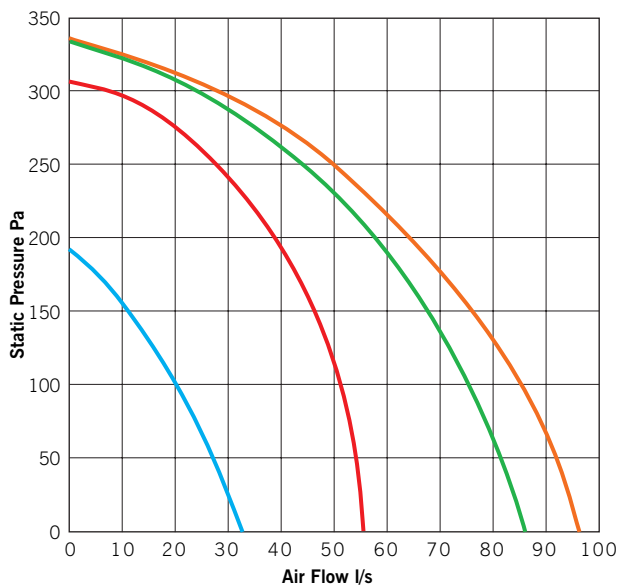
COMPLIES WITH THE REQUIREMENTS OF CONTINUOUS SUPPLY AND MECHANICAL EXTRACT VENTILATION WITH HEAT RECOVERY UNDER **SYSTEM 4 ADF 2006**.

NO BACKGROUND VENTILATORS ARE REQUIRED.

- CE marked
- 2 year guarantee

PERFORMANCE

Model	Performance to BS 848 Pt1 in free air (l/s)			Consumption (W)			Sound Pressure level @ 3m (dB(A))		
	Boost	Medium	Trickle	Boost	Medium	Trickle	Boost	Medium	Trickle
MVHR.65	86	56	33	137	74	40	59	49	39



Trickle — Boost —
Medium — Maximum —

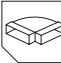
Electrical Specification: 230V~50Hz Class I

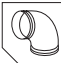
Consumption: Boost Speed 137W
Medium Speed 74W
Trickle Speed 40W

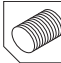
INSTALLATION


- Wiring:** Must comply with IEE Regulations, see wiring diagrams on pages 102–103.
- Fuse:** 3 amp (when fan is supplied from a 5A lighting circuit, no local fuse is required).
- Installation:** Supplied with integral fixing bracket to allow screw fixing to increase support.
Installed using rigid aluminium, PVC or galvanised ducting.
Installation in loft or cupboard.


ANCILLARIES

GD8
Modular light weight PVC ducting system (page 167). 

Galvanised Ducting
A range of galvanised ducting (page 168). 

GFA6.3 or GFA6.10
Flexible 125mm aluminium ducting (page 173). 

GS1
3 position switch available for controlling unit between trickle, medium & boost speeds. 

KI150/KE125/KE100
Ceiling mounted supply valves (page 168). 

KSOP150/KSOP125/KSOP100
Fire rated kitchen extract valves (page 168). 

KSO150/KSO125/KSO100
Ceiling mounted extract valves (page 168). 