

## PREPRUFE® 300R & 160R

Pre-applied waterproofing membranes that bond integrally to poured concrete for use below slabs or behind basement walls on confined sites

### Description

Preprufe® 300R & 160R membranes are unique composite sheets comprising a thick HDPE film, an aggressive pressure sensitive adhesive and a weather resistant protective coating.

Unlike conventional non-adhering membranes, which are vulnerable to water ingress tracking between the unbonded membrane and structure, the unique Preprufe bond to concrete prevents ingress or migration of water around the structure.

The Preprufe R System includes:

- **Preprufe 300R**—heavy-duty grade for use below slabs and on rafts (i.e. mud slabs). Designed to accept the placing of heavy reinforcement using conventional concrete spacers.
- **Preprufe 160R**—thinner grade for blindside, zero property line applications against soil retention systems.
- **Preprufe Tape LT**—for covering cut edges, roll ends, penetrations and detailing (temperatures between 25°F (-4°C) and 86°F (+30°C)).
- **Preprufe Tape HC**—as above for use in Hot Climates (minimum 50°F (10°C)).
- **Bituthene® Liquid Membrane**—for sealing around penetrations, etc.

Preprufe 300R & 160R membranes are applied either horizontally to smooth prepared concrete, carton forms or well rolled and compacted sand or crushed stone substrate; or vertically to permanent formwork or adjoining structures. Concrete is then cast directly against the adhesive side of the membranes. The specially developed Preprufe adhesive layers work together to form a continuous and integral seal to the structure.

Preprufe can be returned up the inside face of slab formwork but is not recommended for conventional twin-sided formwork on walls, etc. Use Bituthene self-adhesive membrane or Procor® fluid applied membrane to walls after removal of formwork for a fully bonded system to all structural surfaces.

### Advantages

- **Forms a unique continuous adhesive bond to concrete poured against it**—prevents water migration and makes it unaffected by ground settlement beneath slabs
- **Fully-adhered watertight laps** and detailing
- **Provides a barrier to water, moisture and gas**—physically isolates the structure from the surrounding ground
- **BBA Certified** for basement Grades 2, 3, & 4 to BS 8102:1990
- **Zero permeance** to moisture

- **Solar reflective**—reduced temperature gain
- **Simple and quick to install**—requiring no priming or fillets
- **Can be applied to permanent formwork**—allows maximum use of confined sites
- **Self protecting**—can be trafficked immediately after application and ready for immediate placing of reinforcement
- **Unaffected by wet conditions**—cannot activate prematurely
- **Inherently waterproof, non-reactive system:**
  - not reliant on confining pressures or hydration
  - unaffected by freeze/thaw, wet/dry cycling
- **Chemical resistant**—effective in most types of soils and waters, protects structure from salt or sulphate attack

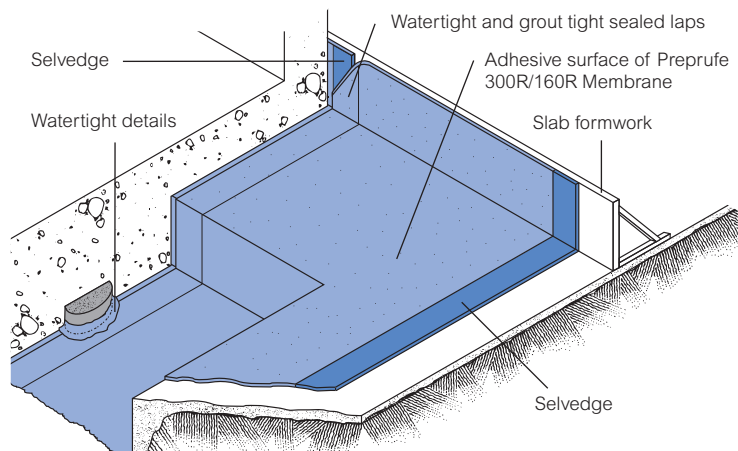
### Installation

The most current application instructions, detail drawings and technical letters can be viewed at [www.graceconstruction.com](http://www.graceconstruction.com). Technical letters are provided for the following subjects to assist in the installation of Preprufe:

- Chemical Resistance
- Minimizing Concrete Shrinkage and Curling
- Rebar Chairs on Preprufe 300R Membrane
- Removal of Formwork Placed Against Preprufe Membranes
- Winter Lap Sealing and the use of Preprufe Tape LT

For other technical information contact your local Grace representative.

Preprufe 300R & 160R membranes are supplied in rolls 4 ft (1.2 m) wide, with a selvedge on one side to provide self-adhered laps for continuity between rolls. The rolls of Preprufe Membrane and Preprufe Tape are interwound with a disposable plastic release liner which must be removed before placing reinforcement and concrete.



Drawings are for illustration purposes only. Please refer to [www.graceconstruction.com](http://www.graceconstruction.com) for specific application details.

## Substrate Preparation

**All surfaces**—It is essential to create a sound and solid substrate to eliminate movement during the concrete pour. Substrates must be regular and smooth with no gaps or voids greater than 0.5 in. (12 mm). Grout around all penetrations such as utility conduits, etc. for stability (see Figure 1).

**Horizontal**—The substrate must be free of loose aggregate and sharp protrusions. Avoid curved or rounded substrates. The surface does not need to be dry, but standing water must be removed.

**Vertical**—Use concrete, plywood, insulation or other approved facing to sheet piling to provide support to the membrane. Board systems such as timber lagging must be close butted to provide support and not more than 0.5 in. (12 mm) out of alignment.

## Membrane Installation

Preprufe can be applied at temperatures of 25°F (-4°C) or above. When installing Preprufe in cold or marginal weather conditions 55°F (<13°C) the use of Preprufe Tape LT is recommended at all laps and detailing. Preprufe Tape LT should be applied to clean, dry surfaces and the release liner must be removed immediately after application.

**Horizontal substrates**—Place the membrane HDPE film side to the substrate with the clear plastic release liner facing towards the concrete pour. End laps should be staggered to avoid a build up of layers. Leave plastic release liner in position until overlap procedure is completed (see Figure 2).

Accurately position succeeding sheets to overlap the previous sheet 3 in. (75 mm) along the marked selvedge. Ensure the underside of the succeeding sheet is clean, dry and free from contamination before attempting to overlap. Peel back the plastic release liner from between the overlaps as the two layers are bonded together. Ensure a continuous bond is achieved without creases and roll firmly with a heavy roller. Completely remove the plastic liner to expose the protective coating. Any initial tack will quickly disappear.

Refer to Grace Tech Letters for information on suitable rebar chairs for Preprufe.

**Vertical substrates**—Mechanically fasten the membrane vertically using fasteners appropriate to the substrate with the clear plastic release liner facing towards the concrete pour. The membrane may be installed in any convenient length. Secure the top of the membrane using a batten such as a termination bar or similar 2 in. (50 mm) below the top edge (see Figure 3). Fastening can be made through the selvedge so that the membrane lays flat and allows firmly rolled overlaps. Immediately remove the plastic release liner. Any additional fasteners must be covered with a patch of Preprufe Tape (see Figure 4).

Ensure the underside of the succeeding sheet is clean, dry and free from contamination before attempting to overlap. Roll firmly to ensure a watertight seal.

**Roll ends and cut edges**—Overlap all roll ends and cut edges by a minimum 3 in. (75 mm) and ensure the area is clean and free from contamination, wiping with a damp cloth if necessary. Allow to dry and apply Preprufe Tape LT (or HC in hot climates) centered over the lap and roll firmly. Immediately remove printed plastic release liner from the tape.

## Details

Refer to Preprufe Field Application Manual, Section V Application Instructions or visit [www.graceconstruction.com](http://www.graceconstruction.com). This Manual gives comprehensive guidance and standard details for:

- internal and external corners
- penetrations
- tiebacks
- columns
- grade beam pilecaps
- tie-ins
- terminations

## Membrane Repair

Inspect the membrane before installation of reinforcement steel, formwork and final placement of concrete. The membrane can be easily cleaned by jet washing if required. Repair damage by wiping the area with a damp cloth to ensure the area is clean and free from dust, and allow to dry. Repair small punctures (0.5 in. (12 mm) or less) and slices by applying Preprufe Tape centered over the damaged area and roll firmly. Remove the release liner from the tape. Repair holes and large punctures by applying a patch of Preprufe membrane, which extends 6 in. (150 mm) beyond the damaged area. Seal all edges of the patch with Preprufe Tape, remove the release liner from the tape and roll firmly. Any areas of damaged adhesive should be covered with Preprufe Tape. Remove printed plastic release liner from tape. Where exposed selvedge has lost adhesion or laps have not been sealed, ensure the area is clean and dry and cover with fresh Preprufe Tape, rolling firmly. Alternatively, use a hot air gun or similar to activate adhesive and firmly roll lap to achieve continuity.

## Pouring of Concrete

Ensure the plastic release liner is removed from all areas of Preprufe R Membrane and Tape.

It is recommended that concrete be poured within 56 days (42 days in hot climates) of application of the membrane. Concrete must be placed and compacted carefully to avoid damage to the membrane. Never use a sharp object to consolidate the concrete.

## Removal of Formwork

Preprufe membranes can be applied to removable formwork, such as slab perimeters, elevator and lift pits, etc. Once the concrete is poured the formwork must remain in place until the concrete has gained sufficient compressive strength to develop the surface bond. Preprufe membranes are not recommended for conventional twin-sided wall forming systems.

A minimum concrete compressive strength of 1500 psi (10 N/mm<sup>2</sup>) is recommended prior to stripping formwork supporting Preprufe membranes. Premature stripping may result in displacement of the membrane and/or spalling of the concrete.

As a guide, to reach the minimum compressive strength stated above, a structural concrete mix with an ultimate strength of 6000 psi (40 N/mm<sup>2</sup>) will typically require a cure time of approximately 6 days at an average ambient temperature of 25°F (-4°C), or 2 days at 70°F (21°C).

Figure 1

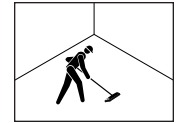


Figure 2

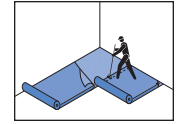
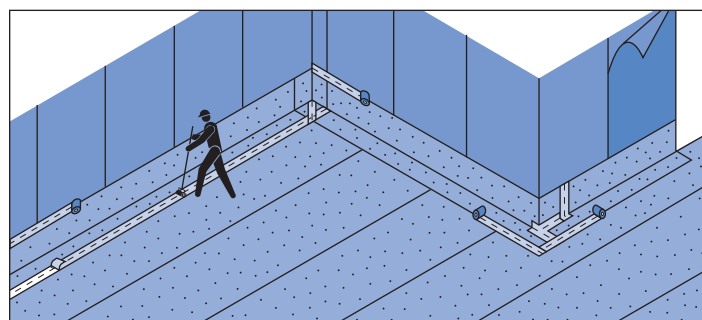
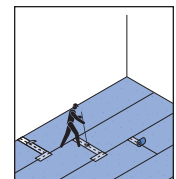


Figure 3



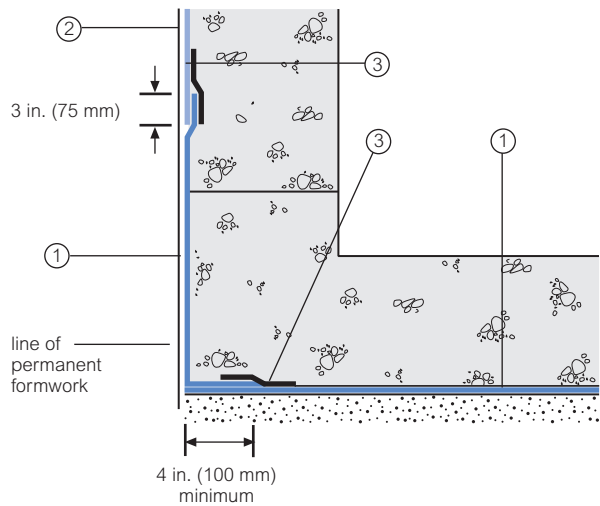
Figure 4



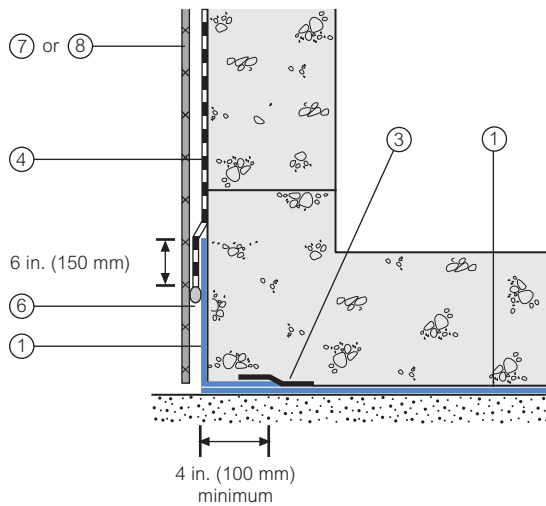
## Detail Drawings

Details shown are typical illustrations and not working details. For a list of the most current details, visit us at [www.graceconstruction.com](http://www.graceconstruction.com). For technical assistance with detailing and problem solving please call toll free at 866-333-3SBM (3726).

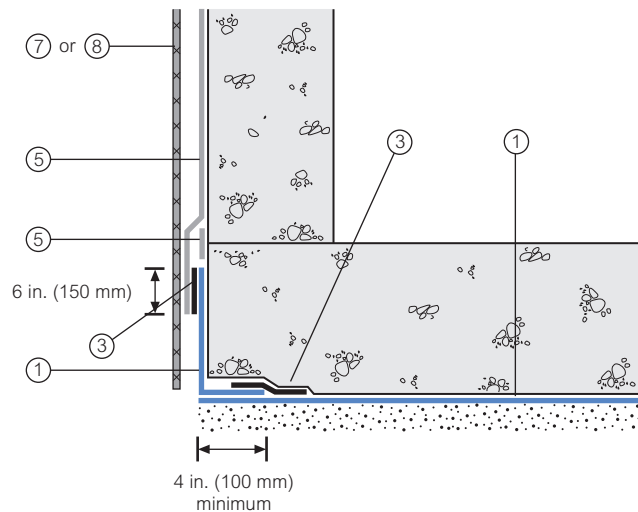
### Wall base detail against permanent shutter



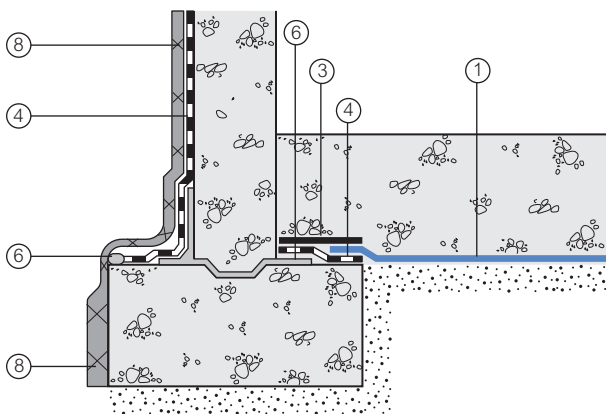
### Bituthene wall base detail (Option 1)



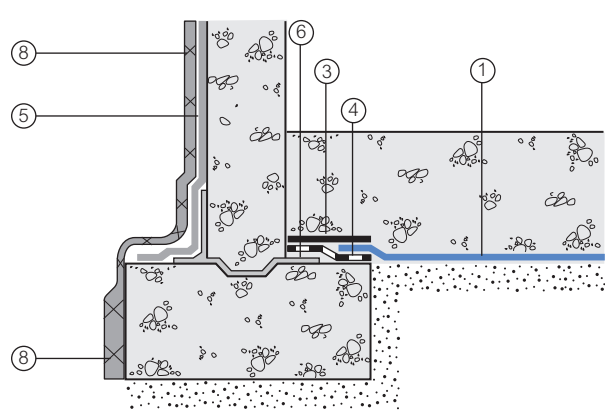
### Procor wall base detail (Option 1)



### Bituthene wall base detail (Option 2)



### Procor wall base detail (Option 2)



1 Preprufe 300R  
2 Preprufe 160R

3 Preprufe Tape  
4 Bituthene

5 Procor  
6 Bituthene Liquid Membrane

7 Protection  
8 Hydroduct®

## Supply

Dimensions (Nominal)	Preprufe 300R Membrane	Preprufe 160R Membrane	Preprufe Tape (LT or HC*)
Thickness	0.046 in. (1.2 mm)	0.032 in. (0.8 mm)	
Roll size	4 ft x 98 ft (1.2 m x 30 m)	4 ft x 115 ft (1.2 m x 35 m)	4 in. x 49 ft (100 mm x 15 m)
Roll area	392 ft <sup>2</sup> (36 m <sup>2</sup> )	460 ft <sup>2</sup> (42 m <sup>2</sup> )	
Roll weight	108 lbs (50 kg)	92 lbs (42 kg)	4.3 lbs (2 kg)
Minimum side/end laps	3 in. (75 mm)	3 in. (75 mm)	3 in. (75 mm)
* LT denotes Low Temperature (between 25°F (-4°C) and 86°F (+30°C)) HC denotes Hot Climate (50°F (>+10°C))			
<b>Ancillary Products</b>			
Bituthene Liquid Membrane—1.5 US gal (5.7 liter) or 4 US gal (15.1 liter)			

## Physical Properties

Property	Typical Value 300R	Typical Value 160R	Test Method
Color	white	white	
Thickness	0.046 in. (1.2 mm) nominal	0.032 in. (0.8 mm) nominal	ASTM D3767
Low temperature flexibility	Unaffected at -10°F (-23°C)	Unaffected at -10°F (-23°C)	ASTM D1970
Resistance to hydrostatic head, minimum	231 ft (70 m)	231 ft (70 m)	ASTM D5385, modified <sup>1</sup>
Elongation, minimum	300%	300%	ASTM D412, modified <sup>2</sup>
Tensile strength, film, minimum	4000 psi (27.6 MPa)	4000 psi (27.6 MPa)	ASTM D412
Crack cycling at -10°F (-23°C), 100 cycles	Unaffected	Unaffected	ASTM C836
Puncture resistance, minimum	221 lbs (990 N)	100 lbs (445 N)	ASTM E154
Peel adhesion to concrete, minimum	5.0 lbs/in. (880 N/m) width	5.0 lbs/in. (880 N/m) width	ASTM D903, modified <sup>3</sup>
Lap peel adhesion	2.5 lbs/in. (440 N/m) width	2.5 lbs/in. (440 N/m) width	ASTM D1876, modified <sup>4</sup>
Permeance to water vapor transmission, maximum	0.01 perms (0.6 ng/(Pa × s × m <sup>2</sup> ))	0.01 perms (0.6 ng/(Pa × s × m <sup>2</sup> ))	ASTM E96, method B
Water absorption, maximum	0.5%	0.5%	ASTM D570
Methane permeability	9.1 mls/m <sup>2</sup> /day	N/A	University of London, QMW College <sup>3</sup>
Permeability <sup>5</sup> (hydraulic conductivity)	$K < 1.4 \times 10^{-11} \text{cm} \cdot \text{s}^{-1}$	$K < 1.4 \times 10^{-11} \text{cm} \cdot \text{s}^{-1}$	ASTM D5084-90

### Footnotes:

- Hydrostatic head tests of Preprufe Membranes are performed by casting concrete against the membrane with a lap. Before the concrete cures, a 0.125 in. (3 mm) spacer is inserted perpendicular to the membrane to create a gap. The cured block is placed in a chamber where water is introduced to the membrane surface up to the head indicated.
- Elongation of membrane is run at a rate of 2 in. (50 mm) per minute.
- Concrete is cast against the protective coating surface of the membrane and allowed to properly dry (7 days minimum). Peel adhesion of membrane to concrete is measured at a rate of 2 in. (50 mm) per minute at room temperature.
- The test is conducted 15 minutes after the lap is formed (per Grace published recommendations) and run at a rate of 2 in. (50 mm) per minute at 25°F (-4°C).
- Result is lower limit of apparatus. Membrane therefore considered impermeable.

### Specification Clauses

Preprufe 300R or 160R shall be applied with its adhesive face presented to receive fresh concrete to which it will integrally bond. Only Grace Construction Products approved membranes shall be bonded to Preprufe 300R/160R. All Preprufe 300R/160R system materials shall be supplied by Grace Construction Products, and applied strictly in accordance with their instructions.

Specimen performance and formatted clauses are also available.

NOTE: Use Preprufe Tape to tie-in Procor with Preprufe.

### Health and Safety

Refer to relevant Material Safety data sheet. Complete rolls should be handled by a minimum of two persons.

[www.graceconstruction.com](http://www.graceconstruction.com)

For technical assistance call toll free at 866-333-3SBM (3726)

Preprufe, Bituthene and Hydroduct are registered trademarks of W. R. Grace & Co.—Conn.  
Procor is a U.S. registered trademark of W. R. Grace & Co.—Conn., and is used in Canada under license from PROCOR LIMITED.

We hope the information here will be helpful. It is based on data and knowledge considered to be true and accurate and is offered for the users' consideration, investigation and verification, but we do not warrant the results to be obtained. Please read all statements, recommendations or suggestions in conjunction with our conditions of sale, which apply to all goods supplied by us. No statement, recommendation or suggestion is intended for any use which would infringe any patent or copyright. W. R. Grace & Co.—Conn., 62 Whittemore Avenue, Cambridge, MA 02140. In Canada, Grace Canada, Inc., 294 Clements Road, West, Ajax, Ontario, Canada L1S 3C6.

This product may be covered by patents or patents pending.  
PF-111E Printed in U.S.A. 3/07

Copyright 2007. W. R. Grace & Co.—Conn.  
FA/LI/1M

**GRACE**