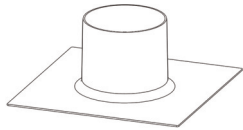
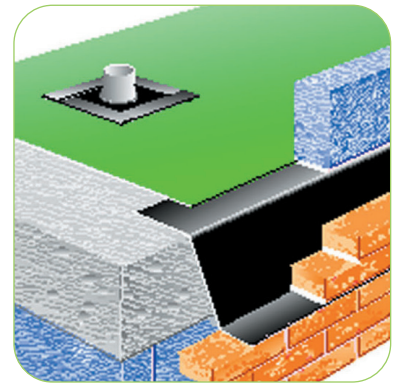
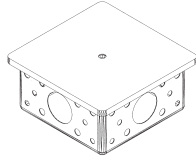


Active-guard RB radon gas barrier

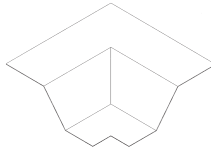
Barrier system for ground gas protection
measures against radon



Top hat collar



Radon sumps



Corner units

Use

- In areas outlined in BRE document "Radon: guidance on protective measures for new dwellings"
- When basic radon protection is required for building in an area with a significant radon potential
- When full radon protection is required for building in an area of high radon potential
- Following a risk assessment and the requirement is for a ground gas protection measure against Radon

Features and benefits

- Simply installed in line with common code of practice for ordinary DPM with additional care with workmanship & detailing
- Wide range of standard pre fabricated accessories
- Robust material is 20% thicker than minimum BRE requirements
- The membrane is economical, will last the lifetime of the building and requires no maintenance
- Small 21.4kg roll sizes for easy manual handling
- Fully itemised schedule service
- Tailor-made accessories designed and manufactured

Quality

- Satisfies NHBC Standards 2006
- Meets BRE Radon requirements
- Manufactured to BS EN ISO 9001:2000
- Complies with Building Regulation 2000 Approved Documents C1 & C2
- Meets all relevant British Standards

Material specification

Product code: **RB375**

Thickness: **375mu** (1500 gauge)

Roll length: **15mtr**

Roll width: **4mtr**

Roll weight: **21.4kg**

Colour: **Green**

Mechanical properties

Tear resistance: **MD-248 N/mm & CD-303 N/mm**

Elongation at break: **800%**

Low temperature flexibility: **-25°C**

Radon permeability: **4x10⁻¹²m²/s**

Moisture vapour trans: **0.16g/m²/s**

Radon permeability: **4x10⁻¹²m²/s**

Radon transmission: **11x10⁻⁹m/s**

Bill of quantity (Radon gas barrier membrane)

J40 Flexible sheet tanking/damp proofing

Clause

140 LOOSE LAID POLYETHYLENE GAS RETARDANT/DAMP PROOF MEMBRANE

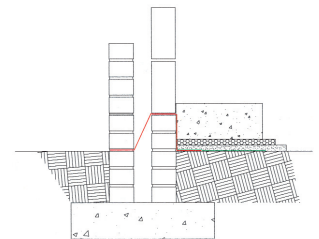
• Manufacturer: **Timloc Building Products, Rawcliffe Road, Goole, East Yorkshire, DN14 6UQ. Tel: 01405 765567, Fax: 01405 720479. Web: www.timloc.co.uk**

• Reference: **Active Guard RB - Radon Barrier DPM**

• Product code: **RB375**

• Use: For use in all types of floor construction to protect buildings against gas penetration from the ground. To cover the full footprint of the building and to incorporate proprietary accessories for pipe, vent protrusions.

Products in the system



Preformed cavity tray system

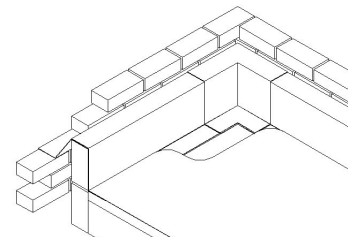
The Active-guard system works by reducing on site exposure to the membrane through the use of independent preformed and rigid cavity trays installed to the perimeter of the building, in both the cavity wall with our PCT range, and internally at slab edging with our SPT range.

Horizontal slab perimeter trays (SPT range)

Supplied in 2.5mtr lengths and manufactured from heavy duty 2mm PP. They should be installed continuously around the internal slab pour area allowing the membrane to be laid at a later stage and so prevent damage as building work proceeds.

Horizontal cavity perimeter trays (PCT range)

Supplied in 2.5mtr lengths and manufactured from heavy duty 2mm PP. They should be installed continuously around the external perimeter of a building to allow the membrane to be laid at a later stage and so prevent damage as building work proceeds.



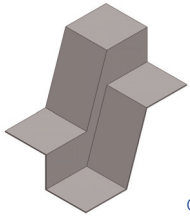
Corners

Available in both SPT and PCT ranges and manufactured from heavy duty 2mm PP. The standard corners are 90° but a wide range of options are available and selection is by cavity size and damp proof course or slab rise required.

Page 1 of 3 see next page

Active-guard RB radon gas barrier

Barrier system for ground gas protection measures against radon



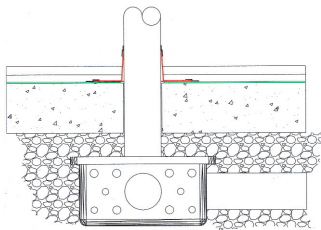
Change of level units

Stopends & change of level units

Available in the PCT range and manufactured from heavy duty 2mm PP. Suitable if breaks appear in the natural run of the cavity tray system, and available in cavity size and rise options with 75, 150 and 225mm steps.

Radon sumps (RSUMP01)

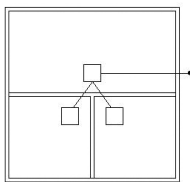
Prefabricated sumps are required when a sub floor depressurisation is required under full radon protection. The sump is installed beneath the floor slab in non suspended floor applications and vented to atmosphere via a connecting 110mm drainage pipe to an external source and capped off with proprietary products i.e. air bricks & telescopic under floor vents or roof vents.



Radon sump illustrating horizontal and vertical 110mm soil pipe for venting with **top hat collar**

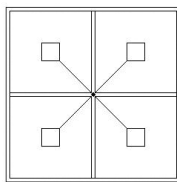
The minimum number of sumps required is one per dwelling, but this will be dependent on the foundation construction of the building.

3x sumps req.



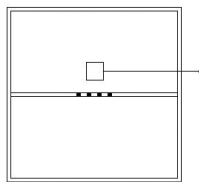
Vented load bearing masonry

4x sumps req.



Non-vented load bearing masonry

single sump req.

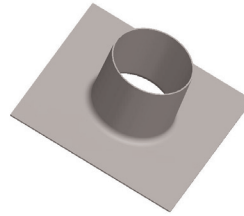


Top hat pipe collars (TH055, TH082, TH110, TH135, TH160)

Top hat pipe collars are available in sizes from 55mm to 160mm. A standard range of preformed pipe sleeves that are designed to have sealing tape applied to the unit base to offer a unit for sealing to a gas barrier and at the intersection of pipe projections.

Common applications are for soil /service pipes passing vertically via a gas barrier or membrane to maintain a continuous seal. Top hats are suitable for installation at ceiling level for pipe protrusions to assist in reducing air leakage.

All sealing tapes (GTAPE 03) and fixing bands (JCLIP 5,6 or 7) are supplied separate to top hat units.

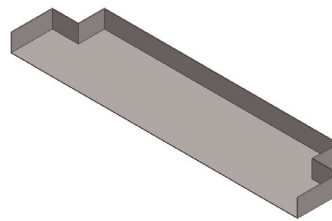


Top hat collar

Jubilee clips size 5 (90mm - 120mm)
Jubilee clips size 6 (110mm - 140mm)
Jubilee clips size 7 (135mm - 160mm)

Televent gas sleeve tray (TST01)

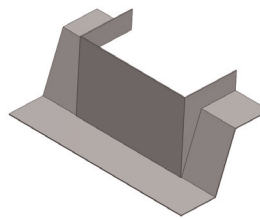
For use when telescopic under floor vents need to pass through a perimeter cavity and still maintain gas tight integrity.



TPT01

Threshold internal protection tray (TPT01)

Designed for detailing rebated areas inside door threshold to maintain water and gas tight integrity without having to trim membrane to fit. Due to possible variations in size, threshold dimensions will be required.



Column cloak

Column cloaks (made to order)

Non standard applications can require gas and water integrity around columns and stanchions. Timloc will design and produce rigid preformed units that are user friendly: simply contact our technical department.

Gastite sealing tape (GTAPE03)

A 2mm x 50mm wide double sided modified polymer strip, protected on both sides with a silicone release paper. The principle is to apply between parts of the system in continuous joint lengths to achieve a gas tight seal. Also available in 100mm width rolls (GTAPE01).

Girth tape (GTAPE02)

A single sided 75mm wide tape with an aggressive adhesive to one side, used to cap overlaps that have been sealed with gastite tape to prevent uplift of joints when concrete slab or screed is poured.

Active-guard RB radon gas barrier

Barrier system for ground gas protection
measures against radon

Page 3 of 3

How to order

- Timloc can prepare a comprehensive schedule and quotation service. Forward full working drawings and specifications to our technical department
- Orders can be established from written quotations by stipulating number issued

Bill of quantity (Gas barrier accessories)

F30 Accessories/sundry items for brick/block/stone walling Clause

360 GAS RESISTANT CAVITY TRAY ACCESSORIES

- Manufacturer: **Timloc Building Products, Rawcliffe Road, Goole, East Yorkshire, DN14 6UQ. Tel: 01405 765567, Fax: 01405 720479. Web: www.timloc.co.uk**
- Reference: e.g. **Top hat pipe collar**
- Size: e.g. **110mm**
- Product code: e.g. **TH110**
- Use: For use in all types of floor construction to protect buildings against gas penetration from the ground. To cover the full footprint of the building and to incorporate proprietary accessories for pipe, vent protrusions.

Product codes

Active-guard RB radon barrier and accessories

Description	Product code
Active-guard RB - radon barrier DPM	RB375
Top hat pipe collars 55mm - 160mm	TH055 – TH160
Jubilee clips size 5, 6, 7	JCLIP 5,6 or 7
Radon sump 350mm x 350mm	RSUMP01
Threshold internal protection tray 930mm	TPT01
Televent gas sleeve tray (cavity tray profile req.)	TST01
Gastite sealing tape 50mm x 15mtr	GTAPE03
Girth tape 75mm x 33mt	GTAPE02

SPT150 Slab perimeter tray 150mm rise	5107
SPT150 Corner tray 90° - 150mm rise	5122
SPT225 Slab perimeter tray 225mm rise	5108
SPT225 Corner tray 90° - 150mm rise	5123

	Product codes to suit cavity widths of		
	50mm	75mm	100mm
PCT150 Perimeter tray 150mm rise	5101	5102	5103
PCT150 External 90° corner tray	5110	5112	5114
PCT150 Internal 90° corner tray	5111	5113	5115
PCT150 Stopend RH	5130	5132	5134
PCT150 Stopend LH	5131	5133	5135
PCT150 Change of level 75mm step	9060	9063	9066
PCT150 Change of level 150mm step	9061	9064	9067
PCT150 Change of level 75mm step	9062	9065	9068
PCT225 Perimeter tray 225mm rise	5104	5105	5106
PCT225 External 90° corner tray	5116	5118	5120
PCT225 Internal 90° corner tray	5117	5119	5121
PCT225 Stopend RH	5136	5138	5140
PCT225 Stopend LH	5137	5139	5141
PCT225 Change of level 75mm step	9070	9073	9076
PCT225 Change of level 150mm step	9071	9074	9077
PCT225 Change of level 75mm step	9072	9075	9078