

# The isomass Screedcheck system

CI/SfB

(43)

(P2)

September 2008

Rev 2.1

## Overlay system for new build, conversion & refurbishment

### PRODUCT DATA

Roll dimensions	10.0m x 1.0m wide
Thickness	10mm
Foam composition	Closed Cell Elastomeric

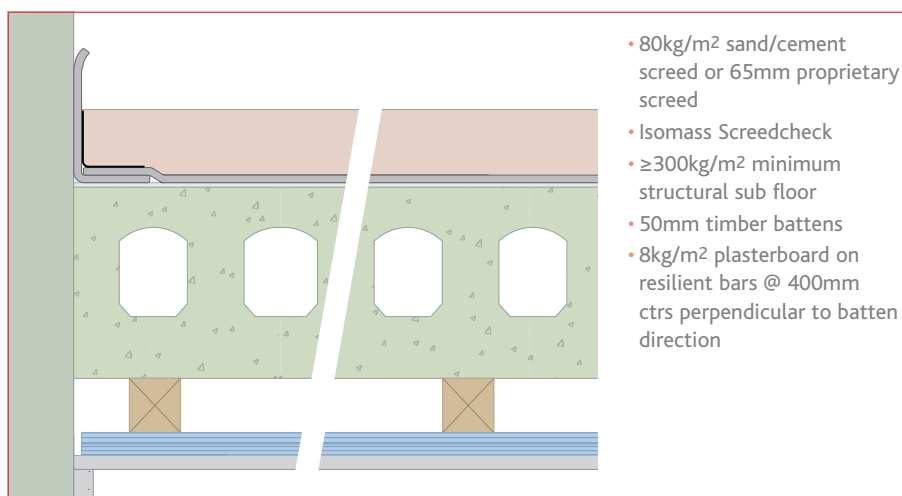
### PERFORMANCE (on the construction illustrated below)

Treated floor with Isomass Screedcheck	Construction complies with the latest version of Approved Doc E of the building regulations. Under separate UKAS laboratory tests it was also found to provide an impact improvement of 18dB ΔLw when placed below a 65mm sand/cement screed.
--	---

### DESCRIPTION

Isomass Screedcheck is designed to reduce impact sound transmission through concrete floors to enable compliance with Approved Document E 2003 and subsequent amendments in 2004.

It is a closed cell elastomeric layer that has been designed to be placed within a masonry structural floor directly below the screed. This serves to isolate the screed from the structural sub floor, and provide sufficient impact absorption to place it amongst the top performing systems available today.



By ensuring that all the joints are taped, bridging will be eliminated which is the single greatest cause of failure of any system of this type.

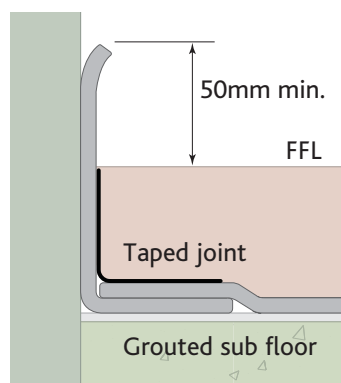
Isomass Screedcheck has been tested to BS EN 29052 and satisfies the dynamic stiffness requirement with a figure of 10MN/m<sup>3</sup>.

### ADDITIONAL BENEFITS

- Tested as a single 10mm layer.
- Closed cells prevents water transmission which can impair acoustic performance.
- Rolls are light and easy to handle.
- All installations over 250m<sup>2</sup> come with a free site inspection prior to laying the screed.

### INSTALLATION

- The floor surface should be swept free of any loose debris that may damage or bridge the system.
- Butt joint and seal all roll edges of Isomass Screedcheck. At perimeters overlap Screedcheck onto a right angle flanking edge strip which should be turned up all vertical surfaces to allow a minimum 50mm to protrude above the intended FFL of the screed.
- Perimeter overlaps and butt joints should be sealed with a min 150mm wide duct tape.
- Services that penetrate the screed should be isolated by wrapping with Screedcheck which again would be taped.
- When trafficking the floor take care not to perform any unnecessary actions that may cause any of the taped joints to be forced apart.



### SPECIFICATION

The acoustic insulant shall be:

- **Isomass Screedcheck**, supplied by Isomass Ltd. St Johns Innovation Centre, Cowley Road, Cambridge, CB4 0WS and installed in accordance with manufacturer's instructions / recommendations.

For advice on treatment of services and penetrations, consult our brochure or visit our website:

[www.isomass.co.uk](http://www.isomass.co.uk)

Every effort has been taken in the preparation of this sheet to ensure the accuracy of representations contained herein. Recommendations as to the use of materials, construction details and methods of installation are given in good faith and relate to typical situations. However, every site has different characteristics and reliance should not be placed upon the foregoing recommendations. Advice can be given as to specific applications.



### TECHNICAL ENQUIRIES

Tel: 0845 838 33 99

Fax: 0845 838 33 89

Email: [info@isomass.co.uk](mailto:info@isomass.co.uk)