

The isocheck SOLO system

Overlay system for new build, conversion & refurbishment

CI/SfB
August 2008
(43) (Y) (P2)
Rev 2.0

product data sheet

PATENT APPLIED FOR

DESCRIPTION

Isocheck SOLO system is designed to reduce sound transmission through traditional joisted timber floors. It can be installed directly over existing floorboards making the system ideal for new build, conversion and refurbishment projects.

Isocheck SOLO consists of a 8mm layer of 'Ecoflex' bonded to 18mm p5 moisture resistant chipboard (option 1) or a new 18mm, carbon negative, p5 strawboard (option 2 - available soon). When installed as part of a complete party floor construction either system enables a traditional timber joisted floor to meet the sound transmission standards of ADE 2003 (amended 2004).

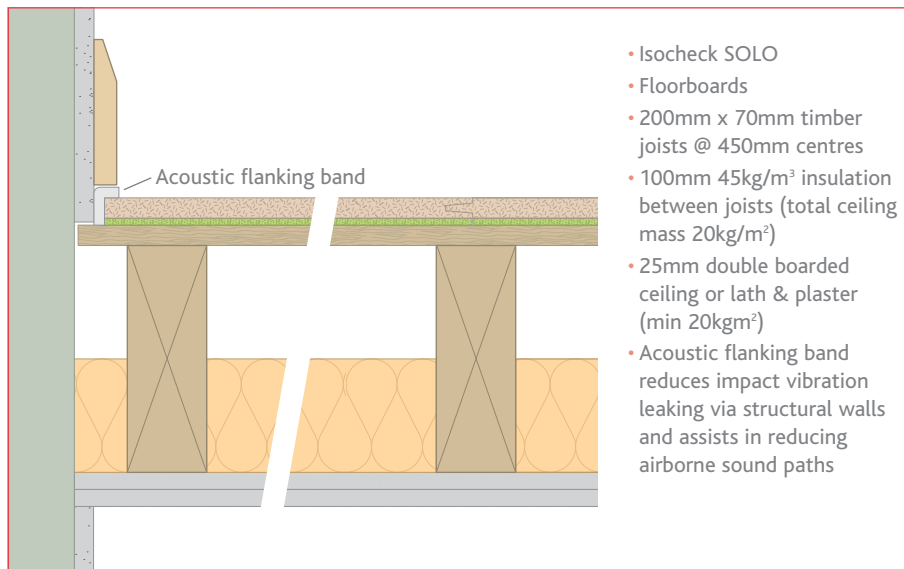
Isocheck SOLO further enhances its appeal by allowing existing ceilings to be reused thus avoiding energy consumption in either their disposal or recycling.

PRODUCT DATA

Overall size	2400 x 600 x 26mm o/a h
Resilient layer thickness	8mm
Resilient layer	Ecoflex
Weight	15.25kg/m ²

PERFORMANCE (on the construction illustrated below)

Treated floor with:	$D_{nT,w} + C_{tr}$	$L'_{nT,w}$
Isocheck SOLO on 18mm chipboard deck	45dB	59dB (rated ★★★)



Every effort has been taken in the preparation of this sheet to ensure the accuracy of representations contained herein. Recommendations as to the use of materials, construction details and methods of installation are given in good faith and relate to typical situations. However, every site has different characteristics and reliance should not be placed upon the foregoing recommendations. Advice can be given as to specific applications.

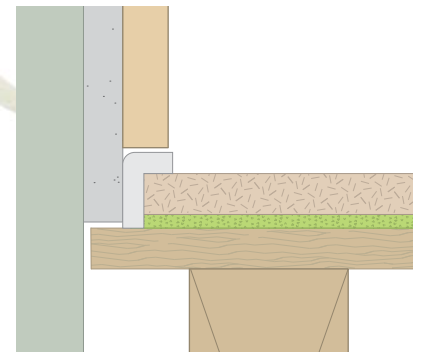
SPECIFICATION

The acoustic floor shall be:

- **Isocheck SOLO system**, manufactured by Isomass Ltd. St Johns Innovation Centre, Cowley Road, Cambridge, CB4 0WS and installed in accordance with manufacturer's instructions / recommendations.

INSTALLATION

- Fix Isocheck Acoustic angled Flanking Band on the edges of the Isocheck boards just before they are pushed against the perimeter walls to isolate the board from the wall.



- Lay Isocheck SOLO over a structural timber sub-floor, in stretcher bond pattern, applying Isocheck adhesive to all tongued and grooved panel joints.
- Install skirting and trim off excess Flanking Band.
- Full installation instructions are available and must be used in conjunction when laying this floating floor system.

For advice on treatment of services and penetrations, consult our brochure or visit our website:

www.isomass.co.uk

TECHNICAL ENQUIRIES

Tel: **0845 838 33 99**

Fax: **0845 838 33 89**

Email: info@isomass.co.uk

SOLO... an environmentally sound solution for conversions & refurb

Architects and builders alike are continually looking for suppliers that can innovate towards helping them to prove their green credentials without compromising on quality and performance. Isomass Ltd is such a supplier with considerable practical knowledge in the field of building acoustics, underpinned by a mission to continually innovate.

With the increasing demand for building products to help safe guard the environment Isomass Ltd are pleased to offer a new acoustic overlay system that not only raises the bar with its environment credentials but delivers a performance that eclipses comparative systems when utilising a direct fixed ceiling such as existing lath & plaster.

COMPOSITION

Isocheck SOLO's resilient layer (ecoflex) contains 20% renewable vegetable based components compared to zero in traditionally manufactured petroleum-based foams, with the added benefit of using less fossil fuel components in its manufacture. A completely new catalyst enables castor oil to be employed in the production of low-emission polyols. With castor oil accounting for 30% of the polyol's total weight it can contribute to yet another renewable recipe to help our environment.



Flower of the castor oil plant (*Ricinus communis*).



PERFORMANCE BENEFITS

Isocheck SOLO has been tested by the NHBC for use in conversion applications and comfortably meets the required performance standards as specified in Approved Document E 2003 without a proprietary resilient bar or MF suspended ceiling system. So now (in cases where the floor void is 200mm or above) it is not necessary to remove a direct fixed ceiling and the existing floor may be rebuilt as a working platform before Isocheck SOLO is incorporated over the floorboards or chipboard. Making the Isocheck SOLO system one of the last operations thus avoiding costly protection necessary on alternative direct to joist systems.



Castor seed is the source of castor oil, which has a wide variety of uses. The seeds contain between 20% and 90% oil that is rich in triglycerides, mainly ricinolein. Native to Africa, Asia and now naturalised throughout Australia, it is often abundant along watercourses and floodplains.