

# Visqueen Protectadrain

- Rapid installation
- High puncture resistance protection
- High flow capacity to alleviate hydrostatic pressure on below ground structures
- Manufactured in the UK

## Description

Visqueen Protectadrain consists of a geotextile filter membrane thermally bonded to a cusped HPDE core. The product is 6mm thick and supplied in rolls 1.1m x 50m.

## Application

Visqueen Protectadrain acts as a heavy duty protection medium for Visqueen damp proofing, gas proofing and tanking membranes. In addition, when used in external tanking applications, the product forms a void to collect and transmit water into adjacent drainage outlets or collector pipes. Typical applications include drainage for externally applied tanking and drainage behind retaining walls.

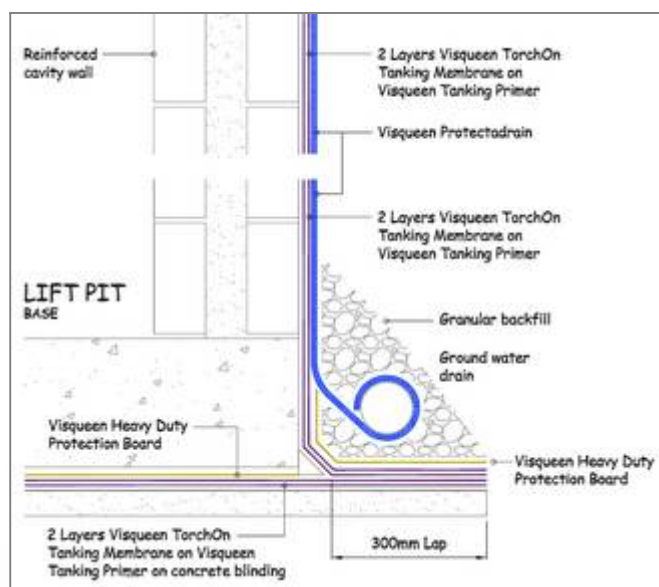


## Installation

Visqueen Protectadrain is designed to be installed with the geotextile filter side (white face) of the product facing the direction of the water flow, backfill medium or slab. Rolls can be cut to length with a sharp knife.

Unroll into position. Adjacent rolls should be placed in a similar way to the first so the dimpled cores butt together. The geotextile filter membrane extends beyond the width of the dimpled HDPE core on one side; this creates an overlap flap which should be secured to the adjacent roll with Visqueen DPM Girth Lap Tape. Continue laying further rolls until the membrane is protected over its entire area.

Visqueen Protectadrain can be strip bonded to membranes with Visqueen Double Sided Jointing Tape.



In external tanking applications, when linking to perforated land drains, extend Visqueen Protectadrain at the base of the retaining wall sufficiently to allow wrapping of the drainage pipe (see figure 1). The product should be covered with backfill as soon as is practicable.

Before covering, inspect the installation of the product to ensure that gaps, open end or sides where soil, aggregate, etc can enter the core are wrapped with geotextile filter membrane and secured with Visqueen DPM Girth Lap Tape.

Figure 1 – Wrapping of drainage pipe (extract from Visqueen drawing PD-01)

# Visqueen Protectadrain

## Additional System Components

- Visqueen DPM Girth Lap Tape (100mm x 33m roll) – secures laps of the geotextile filter membrane
- Visqueen Double Sided Jointing Tape (100mm x 15m roll) – bonds Visqueen Protectadrain to Visqueen membranes

## Technical Data

Roll dimensions	1.1m x 50m x 6mm thick
Roll weight	39kg
Puncture resistance	2000N
Maximum in-plane water flow capacity (EN ISO 12958)	1.4 l/s per metre width
Chemical resistance	Highly resistant

The values given are indicative and correspond to typical results obtained in laboratories and testing institutes.

## Technical Support

For advice on design, detailing or installation, contact Visqueen Specification Sales Office on tel: 0870 609 2084 or fax: 0870 850 8169.

## Availability

Visqueen products are available through Builders Merchants and Distributors nationwide. For details of your local stockist contact Visqueen Sales Office on tel: 01685 846150.

The information given in this datasheet is based on data and knowledge correct at the time of printing. Statements made are of a general nature and are not intended to apply to any use or application outside any referred to in the datasheet. As conditions of usage and installation are beyond our control we do not warrant performance obtained but strongly recommend that our installation guidelines and the relevant British Standard Codes of Practice are adhered to. Please contact us if you are in any doubt as to the suitability of application.

January 2009