

# Bituthene® 8000

Advanced, self-adhesive water and vapour proof membrane for sub-structures.

## Advantages

- **Water and vapour proof** - provides protection for all basements, BS 8102:1990.
- **Gas resistant** - methane, Carbon dioxide and radon gas protection in excess of the standard membrane requirements in BRE Reports 211 (radon) and 212 (methane and carbon dioxide).
- **Superior performance** - 70 m hydrostatic pressure resistance with ultra low moisture transmission rate.
- **Wide application "window"** reduces delays - application temperature range from -10°C to +35°C and damp surface tolerant.
- **Easier handling in warm weather** - over 20% reduction of solar heat absorption.
- **Unique composite film** - engineered for strength, flexibility and a smooth finish.
- **Facilitates quality assured installation** - printed overlap line ensures minimum laps; light grey colour highlights accidental damage for simple patch repairs.
- **System Compatibility** - can be combined with Preprufe® pre-applied membranes, Bituthene® LM, and Hydroduct® for system solutions.

## Description

Bituthene® 8000 combines the proven Bituthene adhesive technology with a unique, grey coloured carrier film to provide superior performance and easier installation. It can be used horizontally or vertically to protect basements and other critical sub-structures from the effects of water, damp and gas penetration.

Bituthene 8000 has been tested to withstand more than 70 m head of water

when fully supported. It also exceeds the BRE minimum recommendation, for methane resistance.

The membrane is printed with the Bituthene logo to aid identification plus an overlap line at each edge to ensure the 50mm minimum laps. Bituthene 8000 is extremely tough but any accidental damage which would otherwise be missed, is made visible by the black compound showing through the light grey film. This can be simply repaired with a patch of Bituthene 8000.

## Ancillary Products

### Primer B2

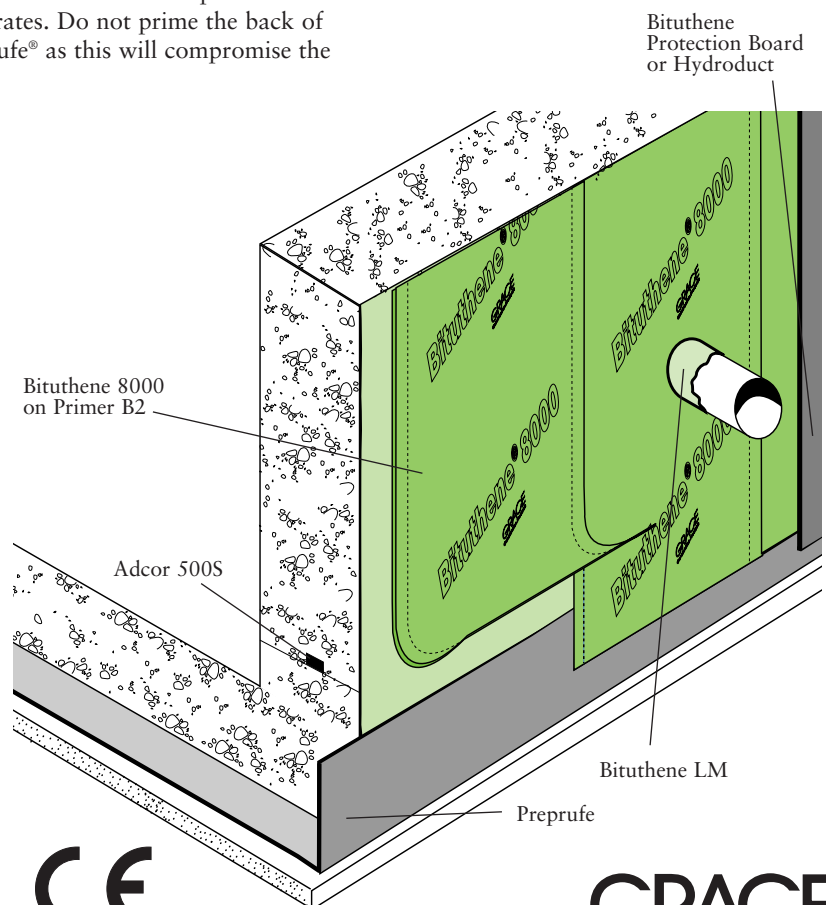
Primer B2 is used to prepare vertical and sloping surfaces and suspended slabs. It is moisture tolerant and can be used on "green" concrete or damp to touch substrates. Do not prime the back of Preprufe® as this will compromise the bond.

### Bituthene® LM

Waterproof continuity at angles and at penetrations is provided by Bituthene LM, two component, chemically curing, liquid applied detailing compound.

### Bituthene® Protection Board

Damage from following trades and backfill is prevented by Bituthene® Protection Boards. Located with Bitustik™ 4000 double sided tape.



## Supply

|                              |   |
|------------------------------|---|
| <b>Bituthene® 8000</b>       | 1 m x 20 m roll<br>(20 sq m) Weight 32 kg   |
| <b>Palletisation</b>         | 15 rolls per pallet   |
| <b>Storage</b>               | Store upright in dry conditions below +30°C   |
| <b>Primer B2</b>             | 5, 25 litre drums   |
| <b>Coverage</b>              | 10 - 12 sq m per litre depending upon method of application, surface porosity and ambient temperature |
| <b>Ancillary Products</b>    |   |
| Bituthene® LM                | 5.7 litre packs   |
| Bituthene® Protection boards | 3 mm x 1 m x 2 m  |
| Adcor® 500S                  | 6 x 5 m rolls   |
| Bitustik™ 4000               | 150 mm x 12 m roll  |
| Lap Roller                   | Unit  |
| Hydroduct®                   | See separate Drainage Sheets sheet  |

## Physical Properties

|                                 | Typical Value  | Test Method  |
|---------------------------------|--|--|
| Thickness                       | 1.5 mm   |  |
| Hydrostatic Head Resistance     | > 70 m (note 1)  | ASTM D5385-93  |
| Water Vapour Transmission Rate  | 0.06 g/m <sup>2</sup> /day   | ASTM E96-92  |
| Methane Permeability            | 3.89 ml/m <sup>2</sup> /day (note 2)                                     | Queen Mary & Westfield College, University of London |
| Tensile Strength (Carrier Film) | Longitudinal 48.4 N/mm <sup>2</sup><br>Transverse 45.4 N/mm <sup>2</sup> | ASTM D638-91   |
| Puncture Resistance             | 280N   | ASTM E154-93   |
| Radon Transmission              | 6 x 10 <sup>-9</sup> m.s <sup>-1</sup>                                   | S.P. Institute, Sweden                               |

Note 1: Test carried out on an overlap crossing a post formed crack.

Note 2: Typical value for BRE recommended minimum standard (BRE Report 212) is 360 ml/m<sup>2</sup>/day.

Bituthene 8000 complies with the relevant section of the following national standards: BS 8102:1990, Building Regulations (England and Wales) 1991 (amended 1994) clause C4. Building Regulations (Northern Ireland) 1994 (amended 1995) clause B2. Building Standard (Scotland) Regulations 1990, Regulation B2.1, G2.6.

## Installation

At air temperatures below +4°C measures should be taken to ensure that all surfaces are free from ice or frost. All surfaces except those below ground bearing slabs and Preprufe® membranes should be primed with one coat of Primer B2 applied at a rate of approx. 10m<sup>2</sup> per litre.

Bituthene 8000 shall be laid by peeling back the protective release paper and applying the adhesive face onto the prepared surface, free from ice, frost or condensation.

Bituthene LM to be applied at all internal and external corners, penetrations etc. prior to applying the overall membrane.

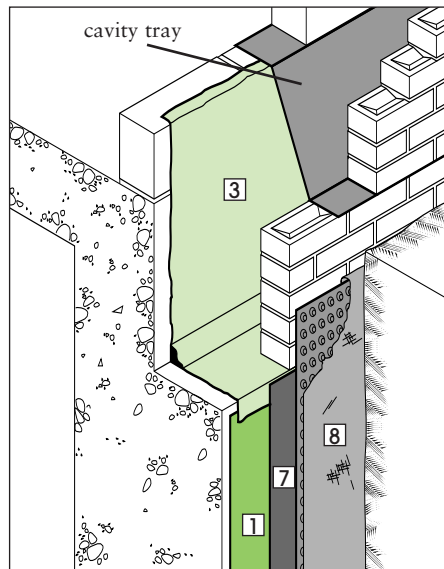
Bituthene 8000 should be brushed onto the surface to ensure good initial bond and exclude air. Adjacent rolls are aligned using printed lines and overlapped 50mm minimum at side and ends and well rolled with a firm pressure, using a lap roller to ensure complete adhesion and continuity between the layers. On high walls it may be necessary to batten fix the membrane to prevent slippage.

### Repairs

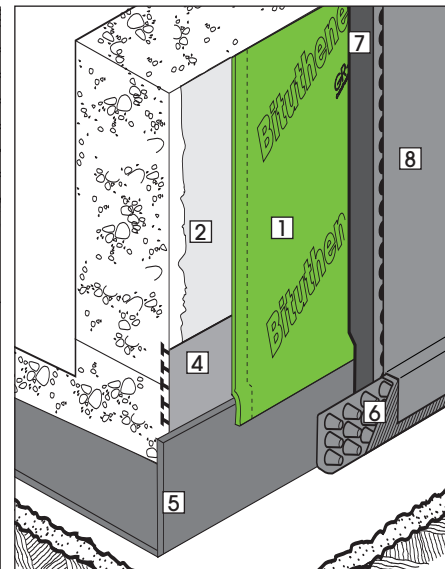
Damaged areas to be repaired by patching with an oversize patch applied to a clean dry surface extending 100mm beyond damage and firmly rolled.

## NBS Specification Clause

Refer to Clause 180 and 190.



Typical ground level termination detail



Typical base slab/wall junction

## Health and Safety

There is no legal requirement for a Material Safety Data Sheet for Bituthene 8000, Bituthene Protection Boards, Bitustik 4000, Lap Roller or Hydroduct. For health and safety questions on these products please contact Grace Construction Products Limited

For Primer B2, and Bituthene LM read the product label and Material Safety Data Sheet (MSDS) before use. Users must comply with all risk and safety phrases. MSDS's can be obtained from Grace Construction Products or from our web site at [www.graceconstruction.com](http://www.graceconstruction.com).

### Key to diagrams:

- 1 Bituthene 8000
- 2 Primer B2
- 3 Bituthene LM
- 4 Serviseal waterstop
- 5 Preprufe
- 6 Hydroduct Coil
- 7 Bituthene Protection Board
- 8 Hydroduct 200

*Details shown are typical illustrations only and not working drawings. For assistance with working drawings and additional technical advice please contact Grace Technical Services*

**web** Visit our web site at [www.graceconstruction.com](http://www.graceconstruction.com)

Grace Construction Products Ltd, Ajax Avenue, Slough, Berkshire SL1 4BH United Kingdom Tel +44 (0)1753 692929 Fax +44 (0)1753 691623

Adcor, Aerofil, BETEC, Bituthene, Hydroduct, Insupak, Korkpak, Paraflex, Paraseal, Preprufe, Procor, Serviseal, Servidek, Servigard, Servijoint, Servimastic, Servipak, Servirufe, Serviseal, Servistrip, Servitite, Vertigard and Vertiseal are registered trademarks of W R Grace & Co.-Conn.  
Adprufe, Armourtape, Bitushield, Bitustik, Bitutape, Hydropaste, Pak Adhesive, PVC Edgetie, Serviband, Serviflex, Servitape, Slipstrip, and Solarshield are trademarks of W R Grace & Co.-Conn.

The information given is based on data and knowledge considered to be true and accurate and is offered for the user's consideration, investigation and verification. Since the conditions of use are beyond our control we do not warrant the results to be obtained. Please read all statements, recommendations or suggestions in conjunction with our conditions of sale including those limiting warranties and remedies which apply to all goods supplied by us. No statement, recommendation or suggestion is intended for any use which would violate or infringe statutory obligations or any rights belonging to a third party.

Copyright 2006. Grace Construction Products Limited.

Printed in England - 05.06- Ref. WM002C

**GRACE**  
Construction Products