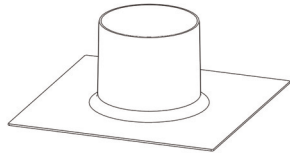
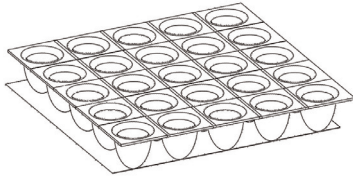


Active-guard MB methane gas barrier

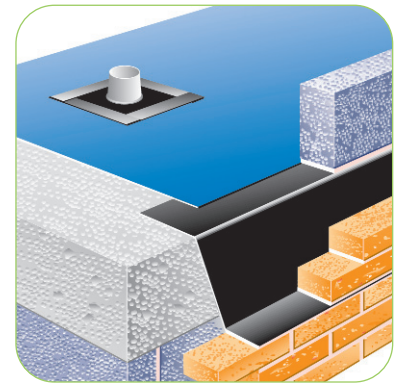
Barrier system for ground protection measures against methane



Top hat collar



Venting layer



Use

- To act as a barrier against gas contaminated land and for brown field sites contaminated with methane
- To cover the footprint of a building to produce a barrier against methane
- Following a risk assessment where the requirement is for a ground gas protection measure against methane

Features and benefits

- Install in line with common code of practice for ordinary DPM plus additional care with workmanship & detailing to joints (BS8215:1991, BS8000:Part 3, 1989 and BS5628:Part 3, 2005)
- Wide range of standard pre fabricated accessories
- Robust virgin material in a range of thicknesses offering high puncture and tear resistance
- Optional DPM for full and low level methane gas protection
- Full itemised schedule service available
- Tailor made accessories designed and manufactured in polypropylene (PP) for maximum resistance
- Flexible and Rigid cavity tray material available for cavity wall protection

Quality

- Satisfies recommendations of BRE 414 "Protective measures for housing on contaminated land" & Ciria report C665 "Assessing risks posed by hazardous ground gases to buildings"
- Suitable for Wilson & Card protection classification 1 – 5*
- Suitable for NHBC traffic light classification Green & Amber 1&2*
- Manufactured to BS EN ISO 9001:2000
- Complies with Building Regulation 2000 Approved Documents C1 & C2
- Meets all relevant British Standards (CP102 and BS8102)

*LMB suitable for classification 1-3 & NHBC traffic light green & amber 1

Material specification

Product code:	MB375	LMB500
Thickness:	375mu	500mu (2000g)
Roll length:	50mtr	12mtr
Roll width:	2mtr	4mtr
Roll weight:	38kg	26.3kg
Colour:	Blue/silver	Yellow

Mechanical properties

Tear resistance MD:	216 N/mm	250 N/mm
---------------------	-----------------	-----------------

Bill of quantity (Methane gas barrier membrane)

J40 Flexible sheet tanking/damp proofing

Clause

140 LOOSE LAID POLYETHYLENE GAS RETARDANT/DAMP PROOF MEMBRANE

• Manufacturer: **Timloc Building Products, Rawcliffe Road, Goole, East Yorkshire, DN14 6UQ. Tel: 01405 765567,**

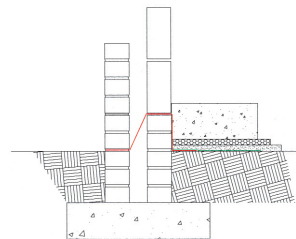
Fax: 01405 720479. Web: www.timloc.co.uk

• Reference: **Active Guard Methane Gas Barrier DPM**

• Product code: **MB375 or LMB500**

• Use: For use in all types of floor construction to protect buildings against gas penetration from the ground. To cover the full footprint of the building and to incorporate proprietary accessories for pipe, vent protrusions.

Products in the system



Preformed cavity tray system

The Active-guard system works by reducing on site exposure to the membrane through the use of independent preformed and rigid cavity trays installed to the perimeter of the building, in both the cavity wall with our PCT range, and internally at slab edging with our SPT range.

Horizontal slab perimeter trays (SPT range)

Supplied in 2.5mtr lengths and manufactured from heavy duty 2mm PP. They should be installed continuously around the internal slab pour area allowing the membrane to be laid at a later stage and so prevent damage as building work proceeds.

Horizontal cavity perimeter trays (PCT range)

Supplied in 2.5mtr lengths and manufactured from heavy duty 2mm PP. They should be installed continuously around the external perimeter of a building to allow the membrane to be laid at a later stage and so prevent damage as building work proceeds.

Gas Barrier DPC (MBDPC)

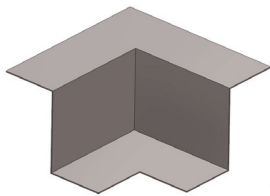
A foil backed embossed polythene material offering a more flexible form of perimeter cavity tray and is available in widths from 100mm to 1000mm, joints and junctions will require preformed accessories for support.

Corners

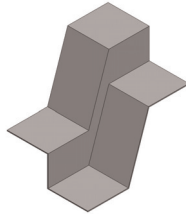
Available in both SPT and PCT ranges and manufactured from heavy duty 2mm PP. The standard corners are 90° but a wide range of options are available and selection is by cavity size and damp proof course or slab rise required.

Active-guard MB methane gas barrier

Barrier system for ground protection measures against methane



Corners



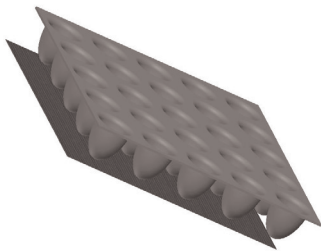
Change of level units

Stopends & change of level units

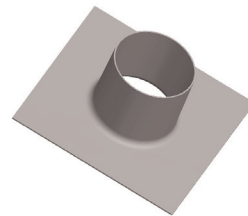
Available in the PCT range and manufactured from heavy duty 2mm PP. Suitable if breaks appear in the natural run of the cavity tray system, and available in cavity size and rise options with 75, 150 and 225mm steps.

Televent gas sleeve tray (TST01)

For use when telescopic under floor vents need to pass through a perimeter cavity while still maintaining gas tight integrity by sealing with gastite and girth tape.



Gas venting layer (GVL25)



Top hat collar

Gas venting layer (GVL25)

Prefabricated venting layers are required when a sub floor depressurisation is required under full gas protection. The layer is installed beneath the floor slab in non suspended floor applications and dressed onto a geotextile filter to prevent blockage, and then allowed to vent to atmosphere via a sequence of connecting parts. To connect venting layer to an external source requires capping off with a GVL900 connector and then extended to length with 1206 extensions to terminate at a telescopic underfloor vent (1201) with airbrick fascia (1201AB) The venting layer strips of 915mm and telescopic vents should be installed at 2 metre centres to generate adequate airflow rate.

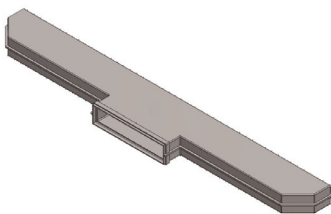
Top hat pipe collars

(TH055, TH082, TH110, TH135, TH160)

Top hat pipe collars are available in sizes from 55mm to 160mm. A standard range of preformed pipe sleeves that are designed to have sealing tape applied to the unit base to offer a unit for sealing to a gas barrier and at the intersection of pipe projections.

Common applications are for soil /service pipes passing vertically via a gas barrier or membrane to maintain a continuous seal. All sealing tapes (GTAPE 01) and fixing bands (JCLIP 5,6 or 7) are supplied separate to top hat units.

- Jubilee clips size 5 (90mm - 120mm)
- Jubilee clips size 6 (110mm - 140mm)
- Jubilee clips size 7 (135mm - 160mm)



GVL900 connector

Threshold internal protection tray (TPT01)

Designed for detailing rebated areas inside door threshold to maintain water and gas tight integrity without having to trim membrane to fit. Due to possible variations in size, threshold dimensions will be required.

Column cloaks (made to order)

Non standard applications can require gas and water integrity around columns and stanchions. Timloc will design and produce rigid preformed units that are user friendly: simply contact our technical department.

Telescopic gas vent outlets (1201+1201AB+1206+GVL900)

The combined units will allow ventilation outlets to either a sub floor void or via a range of adaptors to a venting layer and allow the provision of a minimum of one complete volume change per 24 hours as required by the NHBC. The Timloc vent units will achieve an airflow rate of 4.85L/sec (17m³/hr) or equal to an equivalent area of 6000mm². NB. All airflow testing has been independently tested by the BRE to BS EN 13141-1.

Gastite sealing tape (GTAPE01)

A 2mm x 100mm wide double sided modified polymer strip, protected on both sides with a silicone release paper. The principle is to apply tape between parts of the system in continuous joint lengths to achieve a gas tight seal.

Foil girth tape (GTAPE04)

A single sided 75mm wide foil tape with an aggressive adhesive to one side, used to cap overlaps that have been sealed with gastite tape to prevent uplift of joints when concrete slab or screed is poured.

Active-guard MB methane gas barrier

Barrier system for ground protection measures against methane

Page 3 of 3

How to order

- Timloc can prepare a comprehensive schedule and quotation service by forwarding full working drawings and specifications to our technical department
- Orders can be established from written quotations by stipulating number issued

Bill of quantity (Gas barrier accessories)

F30 Accessories/sundry items for brick/block/stone walling

Clause

- 360 GAS RESISTANT CAVITY TRAY ACCESSORIES
- Manufacturer: **Timloc Building Products, Rawcliffe Road, Goole, East Yorkshire, DN14 6UQ. Tel: 01405 765567, Fax: 01405 720479. Web: www.timloc.co.uk**
 - Reference: e.g. **Top hat pipe collar**
 - Size: e.g. **110mm**
 - Product code: e.g. **TH110**
 - Use: For use in all types of floor construction to protect buildings against gas penetration from the ground. To cover the full footprint of the building and to incorporate proprietary accessories for pipe, vent protrusions.

Product Codes

Active-guard MB methane barrier and accessories

Description	Product code
Active-guard MB methane gas barrier	MB375
Active-guard LMB low level methane barrier	LMB500
Gas barrier DPC	MBDPC/variou
Top hat pipe collars 55mm – 160mm	TH055 - 160
Jubilee clips size 5, 6, 7	JCLIP 5,6 or7
Gas venting layer - 25mm x 915mm	GVL25
Geotextile filter layer	GVF
Gas venting layer to televent connector	GVL900
Telescopic underfloor vent	1201
Air brick	1201AB
Horizontal rear extension	1206
Duct adaptor to 110mm soil pipe	1205
Televent gas sleeve tray (cavity tray profile req.)	TST01
Threshold internal protection tray 930mm	TPT01
Gaslite sealing tape 100mm x 15mtr	GTAPE01
Foil girth tape 75mm x 50mtr	GTAPE04
SPT150 Slab perimeter tray 150mm rise	5107
SPT150 Corner tray 90° - 150mm rise	5122
SPT225 Slab perimeter tray 225mm rise	5108
SPT225 Corner tray 90° - 225mm rise	5123

	Product codes to suit cavity widths of		
	50mm	75mm	100mm
PCT150 Perimeter tray 150mm rise	5101	5102	5103
PCT150 External 90° corner tray	5110	5112	5114
PCT150 Internal 90° corner tray	5111	5113	5115
PCT150 Stopend RH	5130	5132	5134
PCT150 Stopend LH	5131	5133	5135
PCT150 Change of level 75mm step	9060	9063	9066
PCT150 Change of level 150mm step	9061	9064	9067
PCT150 Change of level 75mm step	9062	9065	9068
PCT225 Perimeter tray 225mm rise	5104	5105	5106
PCT225 External 90° corner tray	5116	5118	5120
PCT225 Internal 90° corner tray	5117	5119	5121
PCT225 Stopend RH	5136	5138	5140
PCT225 Stopend LH	5137	5139	5141
PCT225 Change of level 75mm step	9070	9073	9076
PCT225 Change of level 150mm step	9071	9074	9077
PCT225 Change of level 75mm step	9072	9075	9078